

dodson[®]

INSTALLATION INSTRUCTIONS

GR6 PINION SHAFT SEALS

DMS-00-0087 REV 001

04 MARCH 2024

**PREPARED BY: JARROD HAMMOND
DATE: 26JAN2024**

**RELEASED BY: 
DATE: 04MAR2024**

REVISION UPDATE NOTES:

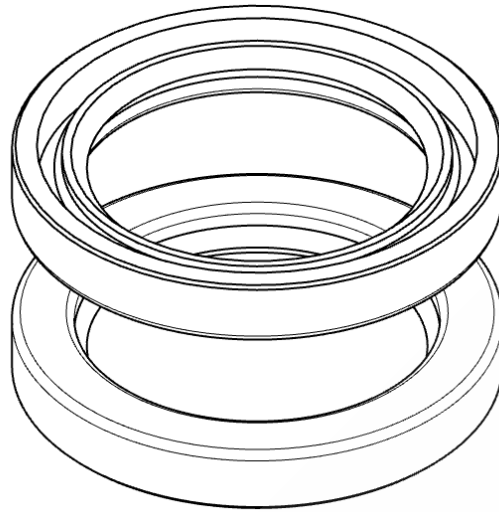
The following table indicates the changes we have made in either the disassembly or assembly of the product you have received. All changes are indicated by a revision bar in the margin.

If you have any questions email us at technical@dodsonmotorsport.com

Revision	Date	Description
REV 001	04MAR2024	- Initial Release

REFERENCES

- **DMS-00-0018 - GR6 Billet Ring and Pinion Instructions**

GR6 PINION SHAFT SEAL CONTENTS (DMS-7286)

Item Number	Part Name	DMS Code	Qty
1	Seal	DMS-2039	2

BY OPENING AND USING THIS DOCUMENT YOU AGREE TO ABIDE BY THE FOLLOWING CONDITIONS. INFORMATION CONTAINED IN PART OR IN WHOLE REMAINS WITH DODSON MOTORSPORT. DODSON MOTORSPORT ACCEPTS NO RESPONSIBILITY FOR ANY REASON WHATSOEVER. DO NOT COPY / REPRODUCE IN ANY FORM OR MAKE PUBLIC WITHOUT THE PERMISSION OF DODSON MOTORSPORT.

GR6 PINION SHAFT SEAL INSTALLATION INSTRUCTIONS

STEP 1

Remove the diff assembly and the pinion from the transmission (see [DMS-00-0018](#) for details).



STEP 2

With the pinion removed, knock the two seals through from the transmission side, taking care not to damage the bores of the transmission housing. Clear out the oil weep hole.

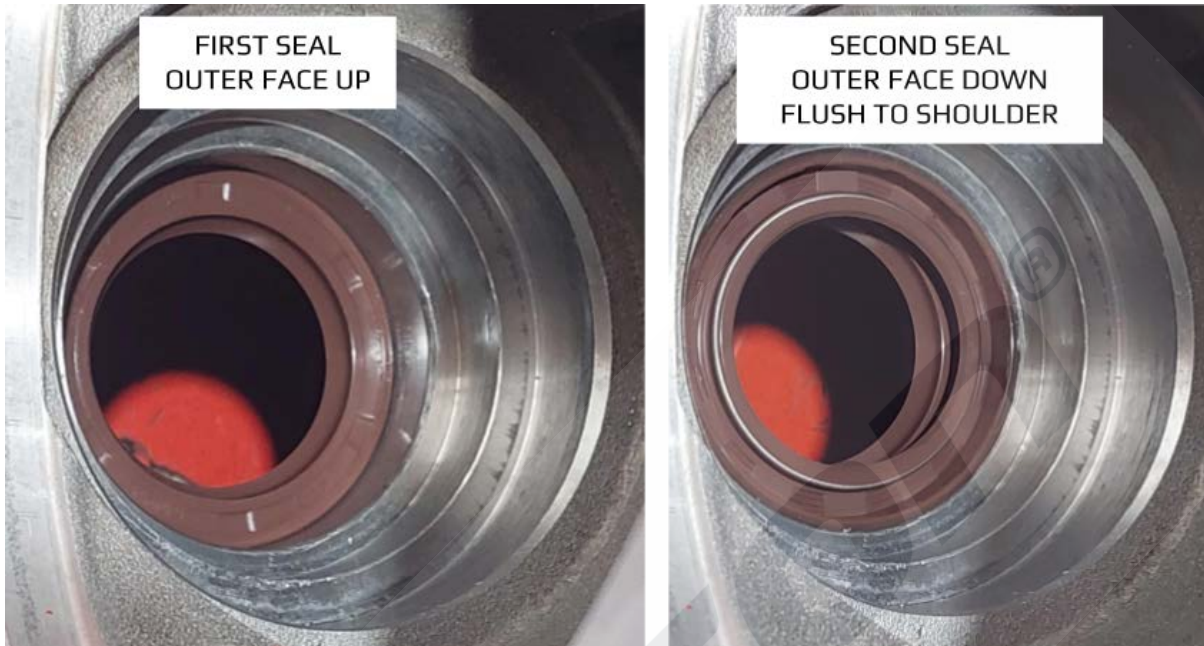


BY OPENING AND USING THIS DOCUMENT YOU AGREE TO ABIDE BY THE FOLLOWING CONDITIONS. INFORMATION CONTAINED IN PART OR IN WHOLE REMAINS WITH DODSON MOTORSPORT. DODSON MOTORSPORT ACCEPTS NO RESPONSIBILITY FOR ANY REASON WHATSOEVER. DO NOT COPY / REPRODUCE IN ANY FORM OR MAKE PUBLIC WITHOUT THE PERMISSION OF DODSON MOTORSPORT.

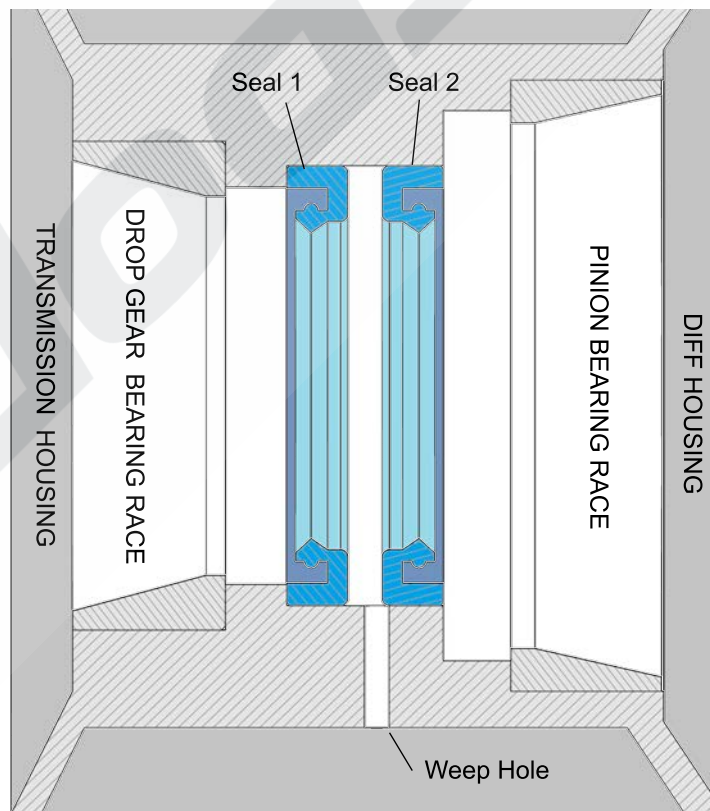
STEP 3

The replacement seals are not directional - both seals are identical.

Install the first seal - and drive home to the bottom of the bore. See image below for the correct direction.



Install the second seal, oriented face-to-face with the first - **DO NOT** press seal in too deep. Press the seal until the edge of the seal is flush with the housing. This ensures the weep hole is exposed, allowing any leakage to drain off, and prevent mixing gearbox oil and diff oil.



BY OPENING AND USING THIS DOCUMENT YOU AGREE TO ABIDE BY THE FOLLOWING CONDITIONS. INFORMATION CONTAINED IN PART OR IN WHOLE REMAINS WITH DODSON MOTORSPORT. DODSON MOTORSPORT ACCEPTS NO RESPONSIBILITY FOR ANY REASON WHATSOEVER. DO NOT COPY / REPRODUCE IN ANY FORM OR MAKE PUBLIC WITHOUT THE PERMISSION OF DODSON MOTORSPORT.

STEP 4

Reassemble Pinion and Diff according to **DMS-00-0018**.

COMPLETED ASSEMBLY:

If you have any questions email us at technical@dodsonmotorsport.com