

dodson[®]

INSTALLATION INSTRUCTIONS

PDK 2WD (ND2015) CLUTCH ASSEMBLY

DMS-00-0021 REV 006

04 DECEMBER 2023

**PREPARED BY: JAN PISL
DATE: 05OCT2023**

**RELEASED BY: 
DATE: 04DEC2023**

REVISION UPDATE NOTES:

The following table indicates the changes we have made in either the disassembly or assembly of the product you have received. All changes are indicated by a revision bar in the margin.

If you have any questions email us at technical@dodsonmotorsport.com

Revision	Date	Description
REV.006	04DEC2023	- Moved the "Clutch Calibration" section to a separate document with a reference. - PAGE 2: Added "References" list.
REV.005	19JUN2023	- PAGE 8: Updated "Important" note in Clutch installation section. - PAGE 2: Moved "Read First" note.
REV.004	17MAY2022	- Revised formatting. - Rewrote some steps for clarity.
REV.003	19NOV2021	- Instructions revised for removing OE shim on page 8.
REV.002	24SEP2021	- Updated to new format.

REFERENCES

- **DMS-00-0079** - PDK PIWIS 3 CLUTCH CALIBRATION

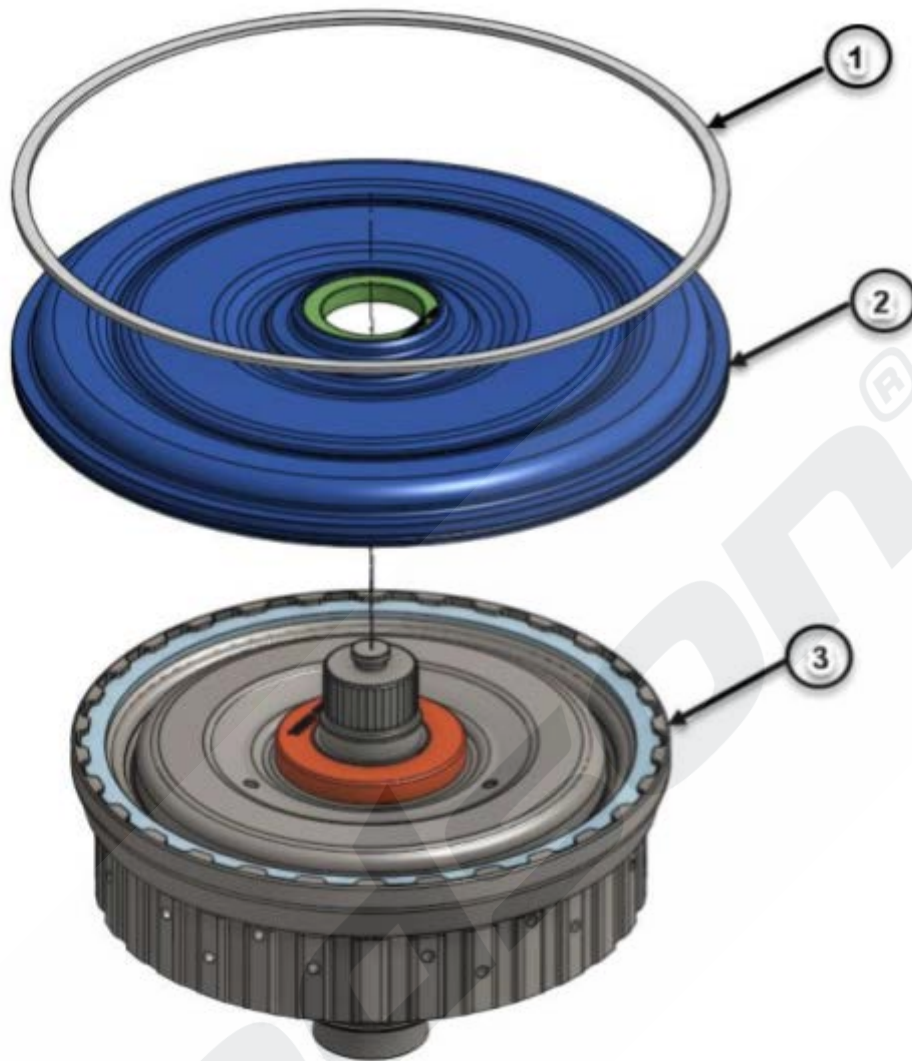
READ FIRST

These instructions must be followed exactly.

PLEASE NOTE, IF THE CAR HAS AFTERMARKET INTAKE OR EXHAUST OR ANY OTHER MODIFICATIONS, THEN THE PRESSURE TO THE CLUTCH NEEDS TO BE ALTERED. THIS CAN BE DONE BY AFTERMARKET SOFTWARE (TUNE). CHECK WITH AFTERMARKET PARTS SUPPLIER TO CONFIRM REQUIRED CHANGES HAVE BEEN DONE TO VEHICLE PRIOR TO CLUTCH LEARN PROCEDURE.

IT'S RECOMMENDED TO HAVE A LITTLE EXTRA PRESSURE FOR LIGHT LOAD/THROTTLE, HIGHWAY DRIVING. ALWAYS MAKE SURE THE TRANS HAS SHIFTED BACK INTO 1ST GEAR ON HARD ACCELERATION AT LOW SPEED (THIS CAN BE DONE ON PADDLE SHIFT), IF NOT, THE CLUTCH CAN BE DAMAGED.

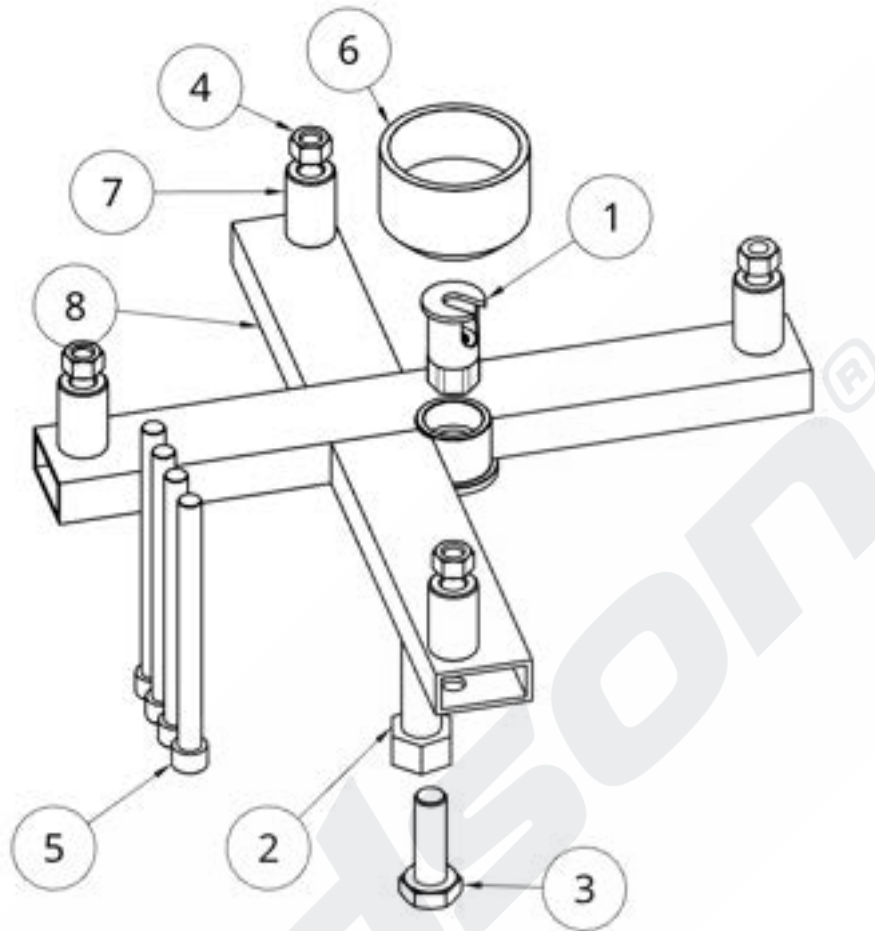
**ALWAYS DRIVE THE CAR IN SPORT OR SPORT+
MODE**

PDK 2WD (ND2015) CLUTCH KIT CONTENTS

Item Number	Part Name	DMS Code	Qty
1	2.5 mm Spacer	DMS-3020*	1
2	Aluminium clutch cover	DMS-3004*	1
3	PDK 2WD (ND2015) CLUTCH KIT	DMS-8085**	1

* Items #1 and #2 are included in the full kit (Item #3).

** This code is for the 11 plate version (8 plate - DMS-8030, 10 plate - DMS-8084) .

PDK TOOLKIT CONTENTS

Item Number	Part Name	DMS Code	Qty
1	Clutch holding tool	DMS-6217	1
2	M20 puller bolt	DMS-2456	1
3	M16 hex bolt	DMS-0103	1
4	M12 nut	DMS-0096	4
5	M12 hex socket bolt	DMS-0102	5
6	Cup tool	DMS-2423	1
7	Tool spacer	DMS-2424	4
8	Clutch tool removal/installation brace	DMS-2455	1

PDK 2WD CLUTCH INSTALLATION INSTRUCTIONS

CLUTCH REMOVAL

STEP 1

Remove the large outer circlip.



STEP 2

Place the clutch holding tool onto the clutch input spline.



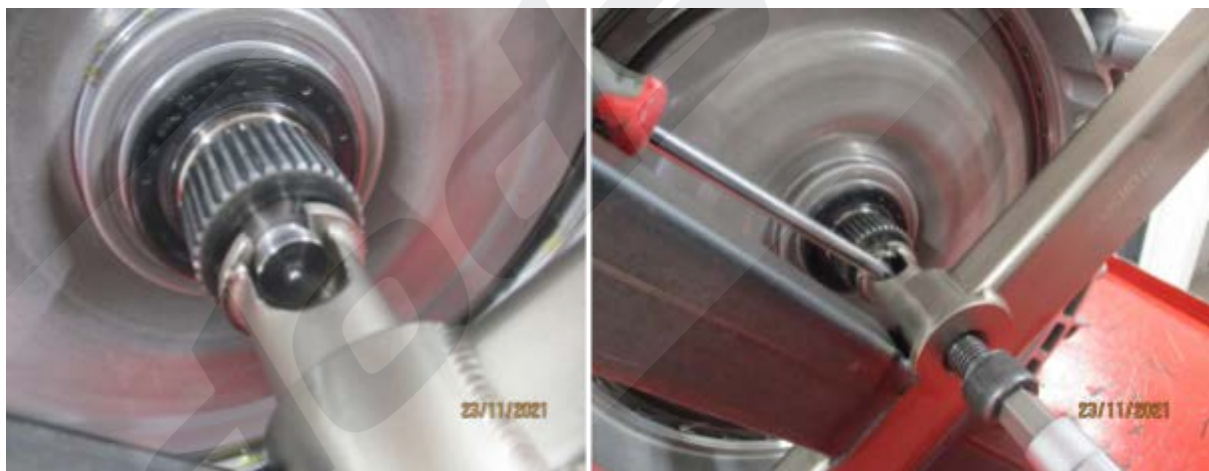
STEP 3

Use M12 bolts and spacers to fix the clutch removal brace to transmission through bellhousing mounting holes as shown.



STEP 4

Thread M16 hex bolt through removal tool brace and into the holder. Use a screwdriver to stop the holder from spinning and tighten to pull the clutch from the housing.



STEP 5

Remove bolts and pull on the removal tool until the clutch is loose inside the transmission housing.



STEP 6

Keep the holder and bolt on to help with transporting the clutch and carefully remove the clutch.



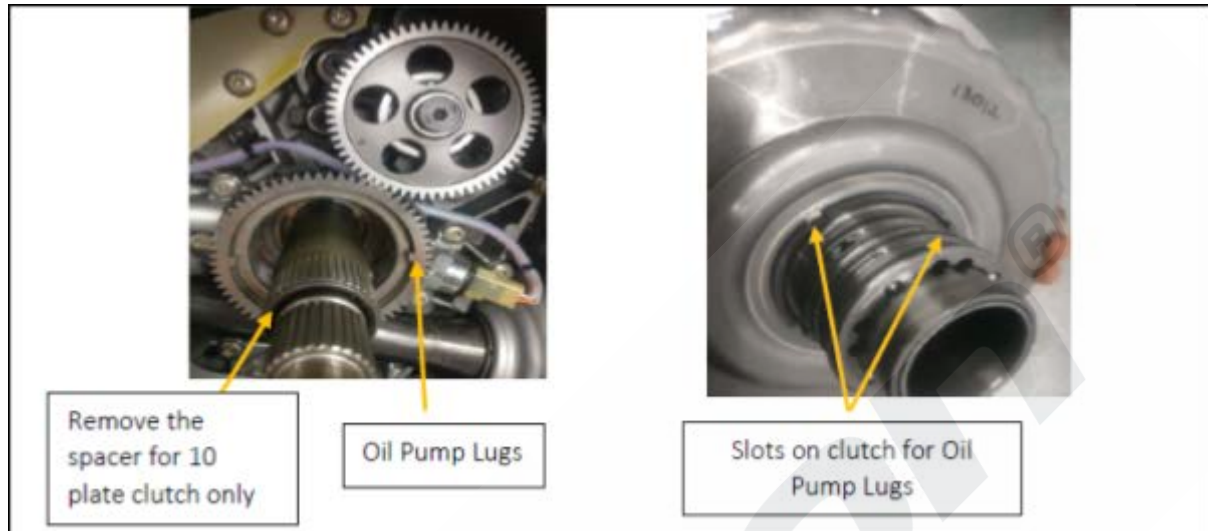
STEP 7

Pack clutch into provided box ensuring clutch is seated into mould.

CLUTCH INSTALLATION

STEP 1

Before installing clutch in the transmission make sure to align oil pump gear lugs horizontally as shown in image below as the lugs mate with slots in clutch as shown in image below.



Align slots on clutch housing horizontally to match the lugs on oil pump gear.

IMPORTANT:

- For Sportsman's Clutch kits
 - 8 (DMS-8030)
 - 10 (DMS-8084)
 - 11 (DMS-8085)

Using Dodson Baskets

Ensure the OEM spacer is **REMOVED** from the gearbox before installing the clutch.



- For Superstock Clutch kits
 - 6 (DMS-8523)

Using OEM Baskets

Keep the OEM spacer and ensure it is **INSTALLED** in the gearbox before installing the clutch.



STEP 2

Tighten M16 bolt in clamp as shown in image below.



STEP 3

Hold the clutch with clamp as shown.



STEP 4

Install clutch in transmission. Rotate the clutch while pushing in the transmission to make sure the oil pump gear locks in as well as the splines of shafts and basket match. You can see the oil pump rotating while turning the clutch. Assemble seal guide on the clutch lid.



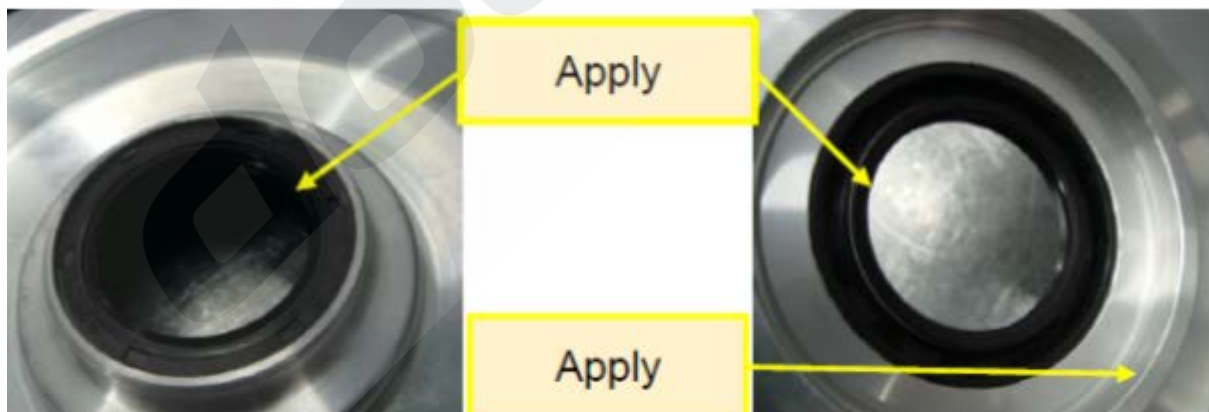
CAUTION - BE GENTLE WHILE ASSEMBLING THE CLUTCH AS THE OIL PUMP GEAR LUGS CAN BREAK.

STEP 5

Ensure the O-ring is **assembled** to the Aluminium clutch cover before the next step.

STEP 6

Apply suitable grease on the lip seal and bearing ID of clutch cover for ease of installation.



STEP 7

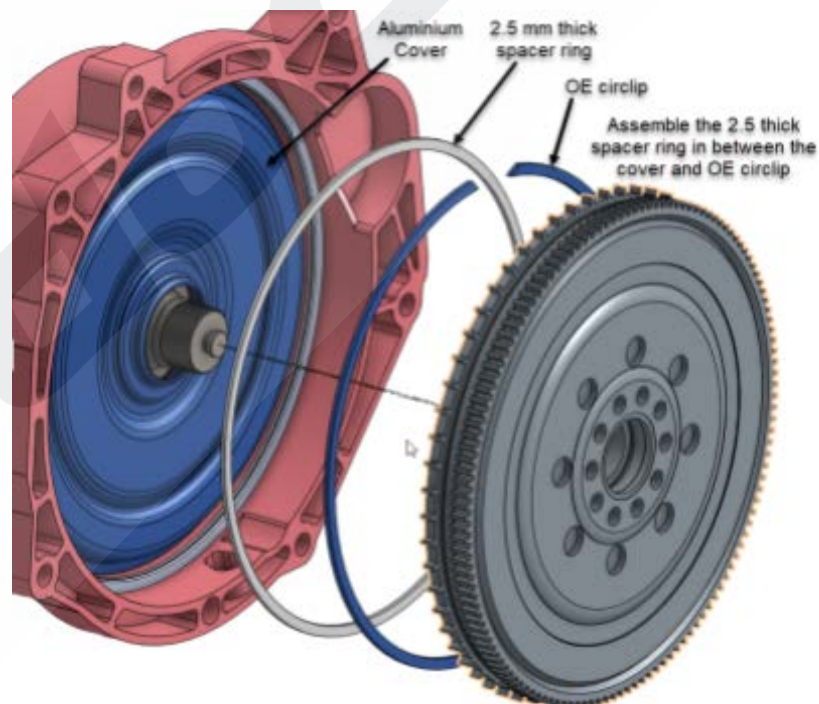
Install the clutch cover.

Using a brass punch or hammer, gently tap on the bearing diameter on the cover while assembling, as shown in the following figure. This will help to avoid jamming the bearing on the bearing ID. If it goes askew, it can result in bending the cover.



STEP 8

Before reattaching the tool brace, place the 2.5 mm thick spacer and large circlip loosely into housing for convenience. Then attach the brace to the bell housing mounting holes just as during removal. (No excessive force should be applied to the outer diameter of the clutch cover).



STEP 9

Place the cup tool on the clutch, then screw in the M20 installation bolt as shown below. Ensure the pressure cup is centred with the clutch to allow the clutch to enter evenly.

**STEP 10**

Tighten the large bolt and begin to push in the PDK clutch until firm.



STEP 11

Once the centre bolt is tight use a soft mallet to tap the outside edge of the clutch cover to evenly press the clutch lid into position. You should be able to see the groove for the circlip all the way around.



STEP 12

Install the spacer ring and the circlip. (No excessive force should be applied to the outer clutch lid).

Once the circlip is installed use the removal holder and bolt to **pull the clutch back lightly** against the circlip. (The clutch should turn freely).



ALWAYS START IN NEUTRAL AFTER CLUTCH INSTALLATION.

IMPORTANT NOTE

PLEASE MAKE SURE THAT THE CLUTCH CALIBRATION AND ROAD TEST PROCEDURES ARE SUCCESSFULLY COMPLETED AS PER DODSON INSTRUCTIONS (DMS-00-0079) BEFORE USING THE FULL POWER OF THE VEHICLE.

If you have any questions email us at technical@dodsonmotorsport.com

BY OPENING AND USING THIS DOCUMENT YOU AGREE TO ABIDE BY THE FOLLOWING CONDITIONS. INFORMATION CONTAINED IN PART OR IN WHOLE REMAINS WITH DODSON MOTORSPORT. DODSON MOTORSPORT ACCEPTS NO RESPONSIBILITY FOR ANY REASON WHATSOEVER. DO NOT COPY / REPRODUCE IN ANY FORM OR MAKE PUBLIC WITHOUT THE PERMISSION OF DODSON MOTORSPORT.