

dodson[®]

INSTALLATION INSTRUCTIONS

**BILLET R35 FRONT DRIVE SHAFT
UPGRADE KIT**

DMS-00-0060 REV 002

05 OCTOBER 2023

**PREPARED BY: JAN PISL
DATE: 04OCT2023**

**RELEASED BY: 
DATE: 05OCT2023**

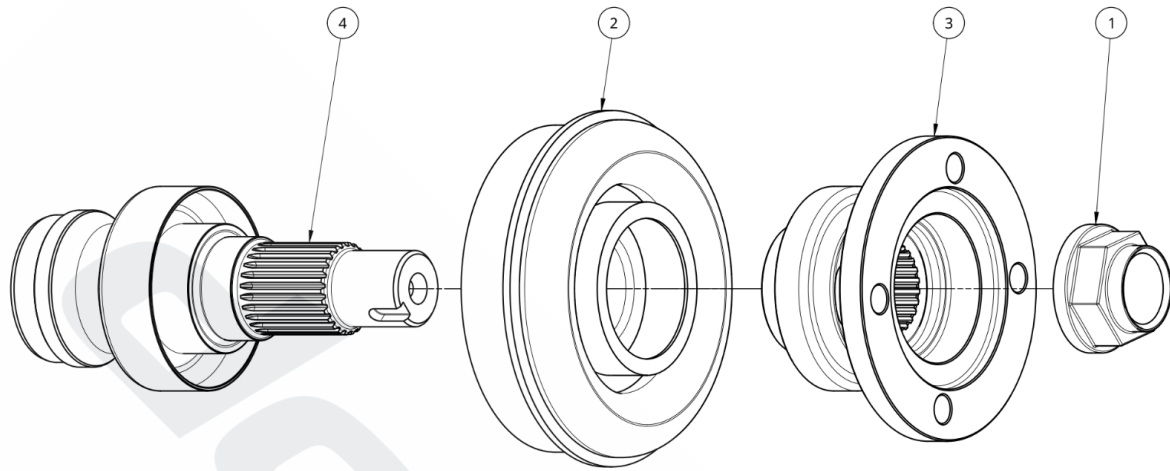
;

REVISION UPDATE NOTES:

The following table indicates the changes made in this document since the previous revision. All changes will be indicated by a revision bar in the margin.

If you have any questions email us at technical@dodsonmotorsport.com

Revision	Date	Description
REV.002	05OCT2023	<ul style="list-style-type: none">- Updated to new format.- Added contents list and image.- Added assembly photos.
REV.001	13SEP2021	<ul style="list-style-type: none">- Update to new format

**R35 FRONT DRIVE SHAFT UPGRADE KIT CONTENTS
(DMS-7143)**

Item Number	Part Name	DMS Code	Qty
1	FWD Shaft Assembly Nut	DMS-0172	1
2	Upgraded Hanger Bearing	DMS-1439	1
3	Upgraded Mounting Flange	DMS-6268	1
4	Upgraded Splined Shaft	DMS-6269	1

BILLET R35 FRONT DRIVE SHAFT UPGRADE KIT MODIFY HANGER BEARING

STEP 1

Drill out the spot welds for the original bearing and remove the bearing.



STEP 2

You may need to cut a relief in the original hanger in order to get the upgraded bearing to fit as its overall outer diameter is slightly larger. Once this is inserted and fits tight, you can reweld the bearing to the hanger through the same drill holes.

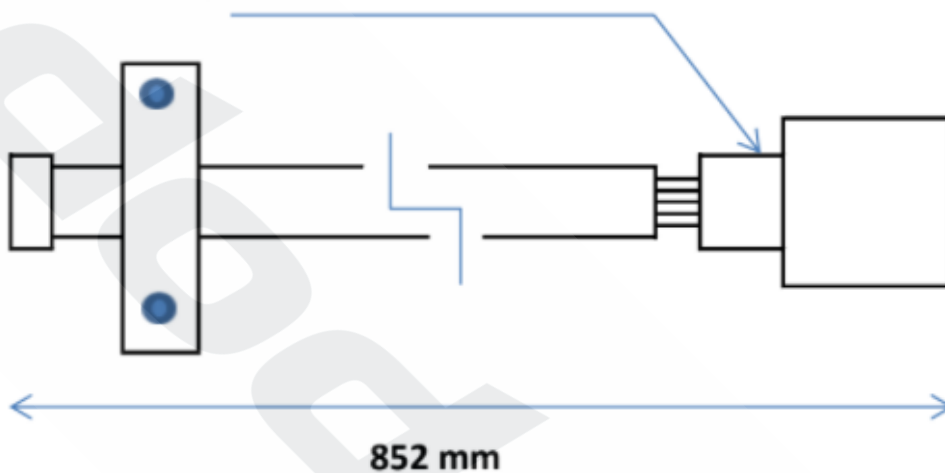


MODIFY SHAFT

STEP 1

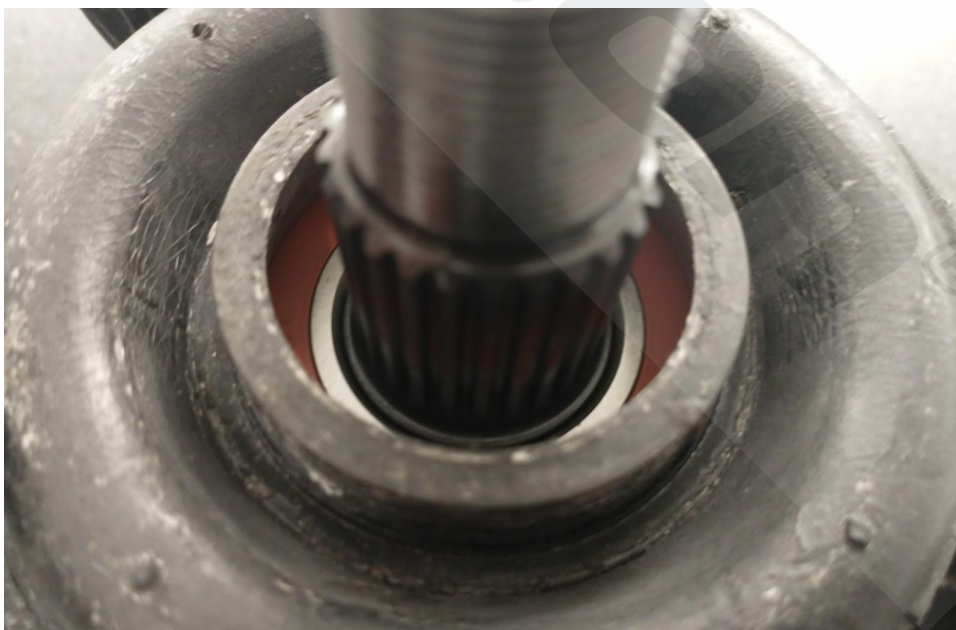
Cut off the original stub from the propshaft. You may need to size the tube in order for the new stub to fit inside snugly. Once the new stub is in the correct position, **weld and balance the shaft (this is best performed by a driveshaft shop that has the appropriate equipment).**

Note: measurement taken with rear CV joint in centre of travel



STEP 2

Assemble the new hanger bearing onto the shaft with the metal dust shield towards the shaft.



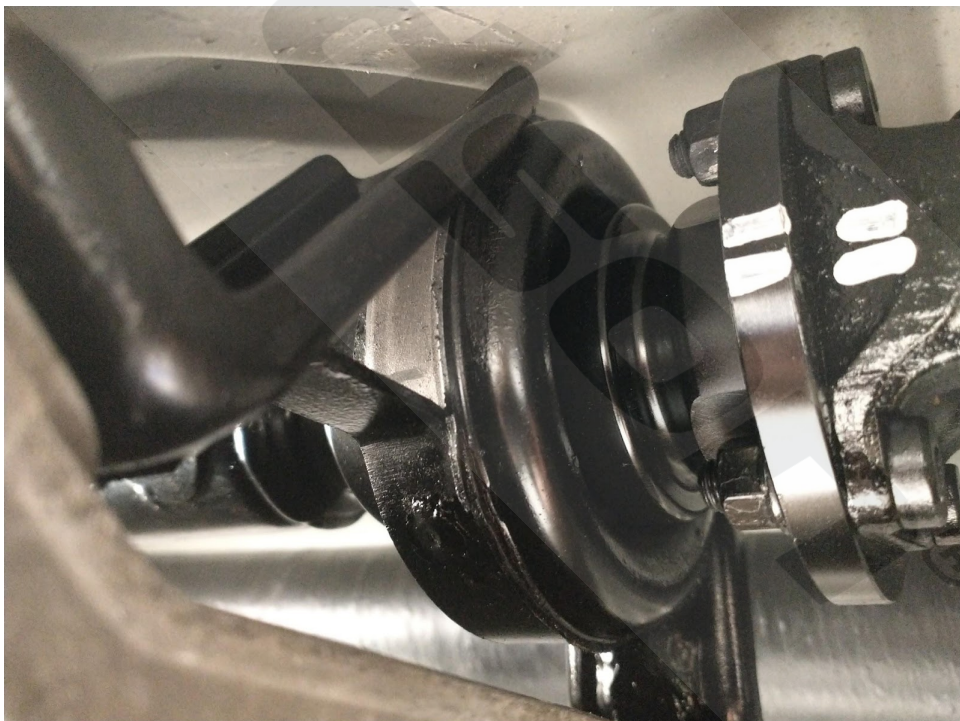
STEP 3

Install the supplied drive flange and tighten the flange nut. Peen over the lock-tab to ensure it does not come undone.



STEP 4

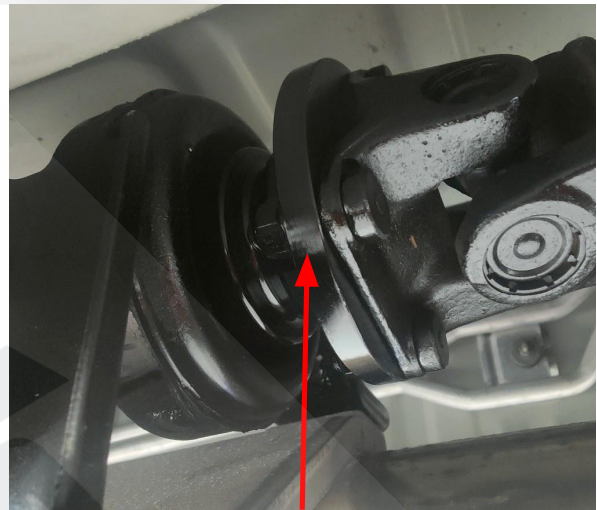
Install the front half of the propshaft and **balance the entire assembly.**



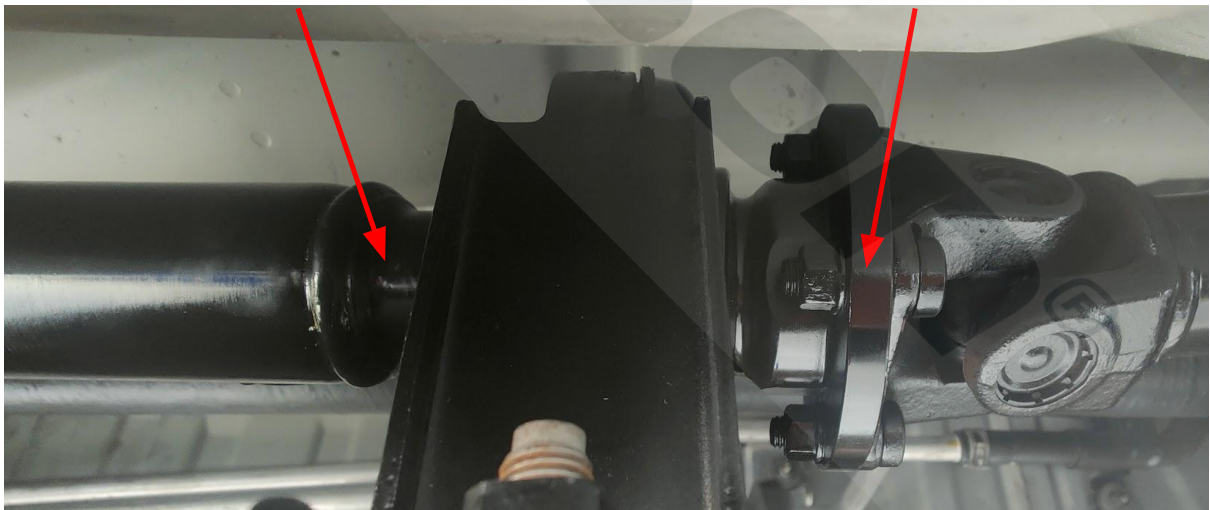
COMPLETED ASSEMBLY



UPGRADED SPLINED SHAFT



UPGRADED FLANGE



If you have any questions email us at technical@dodsonmotorsport.com

BY OPENING AND USING THIS DOCUMENT YOU AGREE TO ABIDE BY THE FOLLOWING CONDITIONS. INFORMATION CONTAINED IN PART OR IN WHOLE REMAINS WITH DODSON MOTORSPORT. DODSON MOTORSPORT ACCEPTS NO RESPONSIBILITY FOR ANY REASON WHATSOEVER. DO NOT COPY / REPRODUCE IN ANY FORM OR MAKE PUBLIC WITHOUT THE PERMISSION OF DODSON MOTORSPORT.