

dodson[®]

INSTALLATION INSTRUCTIONS

DQ500 LID UPGRADE

DMS-00-0051 REV 001

19 JAN 2023

**PREPARED BY: TAYLOR GREY
DATE: 19JAN23**

**RELEASED BY: *AFD*
DATE: 19JAN23**

REVISION UPDATE NOTES:

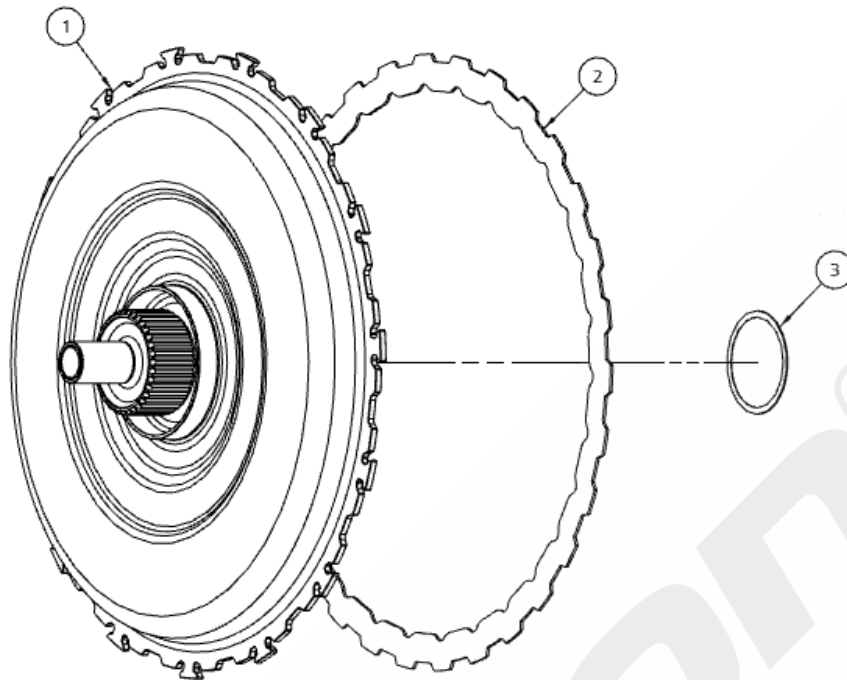
The following table indicates the changes we have made in either the disassembly or assembly of the product you have received. All changes are indicated by a revision bar in the margin.

If you have any questions email us at technical@dodsonmotorsport.com

Revision	Date	Description
REV 001	19JAN2023	- Original issue



BY OPENING AND USING THIS DOCUMENT YOU AGREE TO ABIDE BY THE FOLLOWING CONDITIONS. INFORMATION CONTAINED IN PART OR IN WHOLE REMAINS WITH DODSON MOTORSPORT. DODSON MOTORSPORT ACCEPTS NO RESPONSIBILITY FOR ANY REASON WHATSOEVER. DO NOT COPY / REPRODUCE IN ANY FORM OR MAKE PUBLIC WITHOUT THE PERMISSION OF DODSON MOTORSPORT.

DQ500 LID UPGRADE CONTENTS (DMS-3035 KIT)

Part Number	Part Name	DMS Code	Qty
1	Clutch Lid Assembled	DMS-3024	1
2	Clutch Pack Steel Large 1.0mm	DMS-4419	1
3	Clutch Lid Endfloat Shim	DMS-1025	1

BY OPENING AND USING THIS DOCUMENT YOU AGREE TO ABIDE BY THE FOLLOWING CONDITIONS. INFORMATION CONTAINED IN PART OR IN WHOLE REMAINS WITH DODSON MOTORSPORT. DODSON MOTORSPORT ACCEPTS NO RESPONSIBILITY FOR ANY REASON WHATSOEVER. DO NOT COPY / REPRODUCE IN ANY FORM OR MAKE PUBLIC WITHOUT THE PERMISSION OF DODSON MOTORSPORT.

DQ500 7-8 INSTALLATION INSTRUCTIONS

DISASSEMBLY

STEP 1

To remove the clutch from the car you must remove the large circlip retaining the lid. You must then remove the lid and small circlip holding the large basket. Once complete the clutch can now be taken from the transmission.

ASSEMBLY

- It is best to mock-build the clutch without stacks in the gearbox to ensure there is proper end float and baskets spin freely.
- There are 2 known versions of the OEM core that vary in height. The variance comes from cores produced 2012 and prior (8P cars) and 2013 onwards (8V onwards).
- When installing in an 8P core there will be more end float than in an 8V core. To manage this you will need to add the lid shim (DMS-1025) when installing in the 8P core. (It doesn't matter which core goes in which car, an 8V core can go in an 8P car and vice versa)



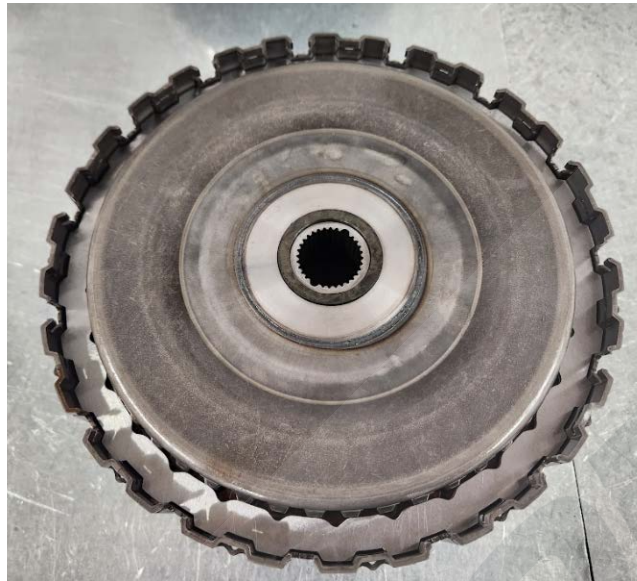
8V Onwards Lid Part Number - OBH141029Q_ (Left)

8P Lid Part number - OBH141029N_ (Right)

- It is then best to mock build the clutch with stacks on the bench and measure the clearances before properly installing it in the gearbox.

STEP 1

With the lid removed, place the included Dodson Clutch Pack Steel Large 1.0mm on top of the large stack.



STEP 2

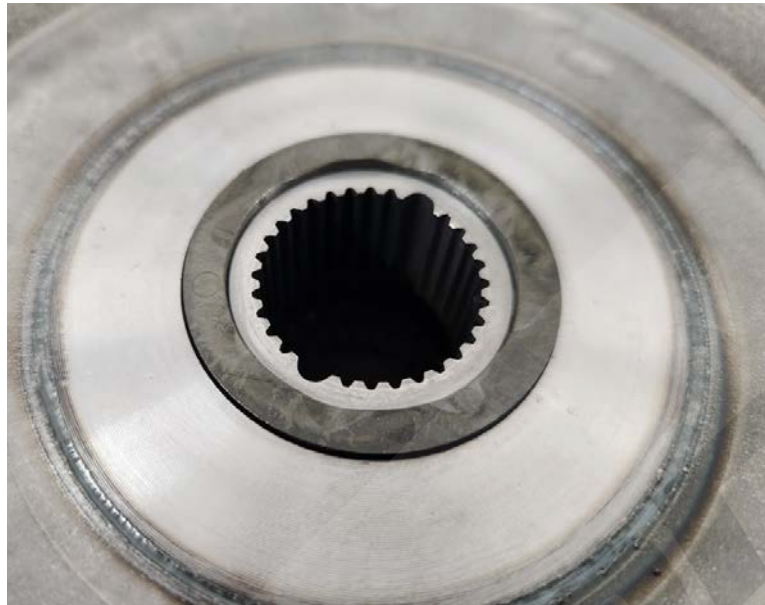
If you are building into an older 8P core you will need to add the lid shim to the large basket. Otherwise, if you are building into an 8V core, skip steps 2 and 3.

Remove the plastic thrust washer and place the shim underneath.



STEP 3

Place the plastic thrust washer back on top of the shim.



STEP 4

Ensure to include the OEM circlip shim.



BY OPENING AND USING THIS DOCUMENT YOU AGREE TO ABIDE BY THE FOLLOWING CONDITIONS. INFORMATION CONTAINED IN PART OR IN WHOLE REMAINS WITH DODSON MOTORSPORT. DODSON MOTORSPORT ACCEPTS NO RESPONSIBILITY FOR ANY REASON WHATSOEVER. DO NOT COPY / REPRODUCE IN ANY FORM OR MAKE PUBLIC WITHOUT THE PERMISSION OF DODSON MOTORSPORT.

STEP 5

Install the lid and OEM large retaining circlip. The lid will be tight and may need a tap with the hammer to install. Do Not use a hydraulic press!



STEP 6

Fit the clutch cover. It is helpful to use the provided Dodson seal guide. Once seated correctly fit the OEM clutch cover circlip.

If you have any questions email us at technical@dodsonmotorsport.com