

dodson[®]

INSTALLATION INSTRUCTIONS

R35 GTR STEERING LOCK DELETE KIT

DMS-00-0074 REV 002

30 MAY 2023

**PREPARED BY: GREG BUCHANAN
DATE: 25MAY2023**

**RELEASED BY: J.PISL
DATE: 30MAY2023** *APD*

REVISION UPDATE NOTES:

The following table indicates the changes made in this document since the previous revision. All changes will be indicated by a revision bar in the margin.

If you have any questions email us at technical@dodsonmotorsport.com

Revision	Date	Description
REV.002	30MAY2023	<ul style="list-style-type: none">- Updated to new format.- Replaced assembly photos and rewrote the instructions to suit current design.
REV.001	12JUL2019	<ul style="list-style-type: none">- Document release.

DISASSEMBLY

STEP 1

Drill out the 8 tabs that secure the lid of the OEM steering lock to its base, as shown in the picture below.



STEP 2

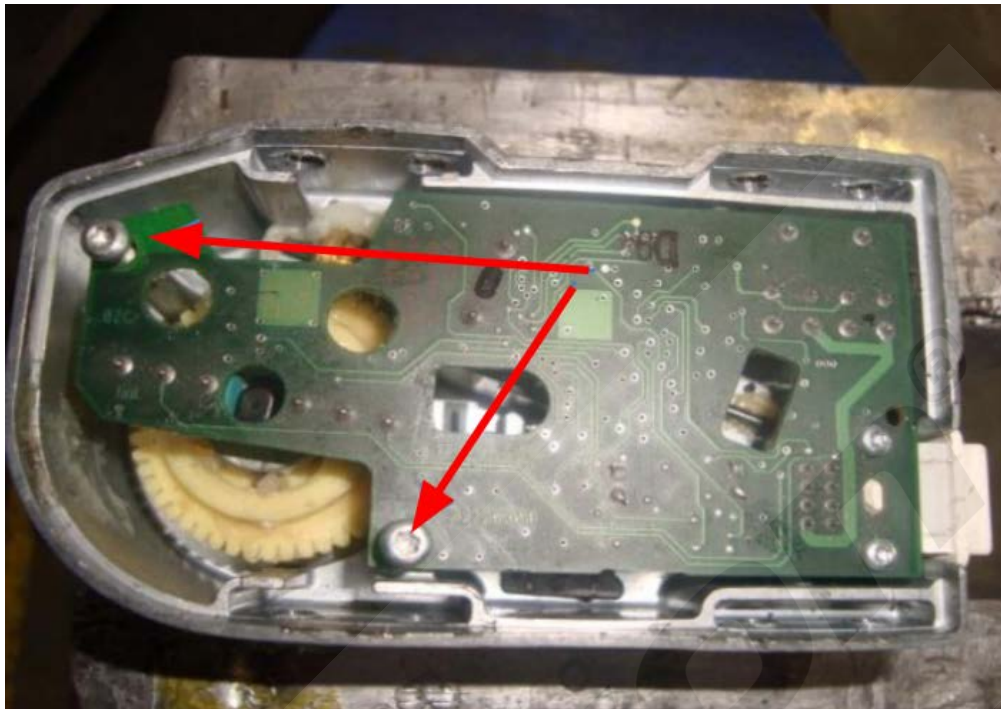
Once the 8 tabs have been drilled out, pry the lid up evenly until it is free of the base.



BY OPENING AND USING THIS DOCUMENT YOU AGREE TO ABIDE BY THE FOLLOWING CONDITIONS. INFORMATION CONTAINED IN PART OR IN WHOLE REMAINS WITH DODSON MOTORSPORT. DODSON MOTORSPORT ACCEPTS NO RESPONSIBILITY FOR ANY REASON WHATSOEVER. DO NOT COPY / REPRODUCE IN ANY FORM OR MAKE PUBLIC WITHOUT THE PERMISSION OF DODSON MOTORSPORT.

STEP 3

Unscrew the 2 T10 bolts that secure the board to the base.



STEP 4

Remove the board from its housing.



STEP 5

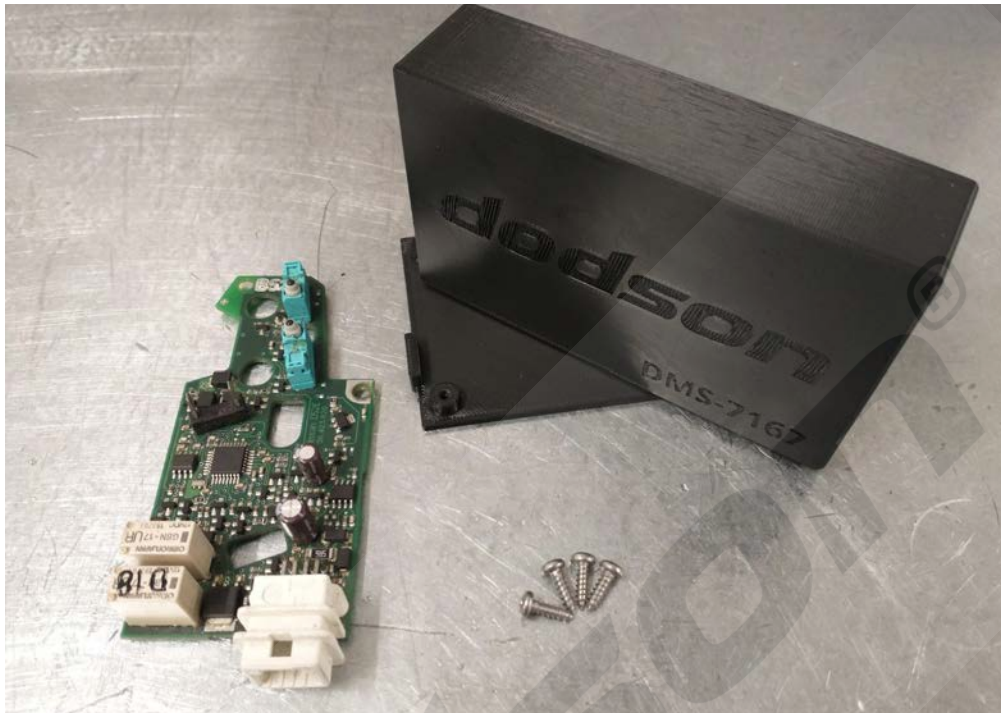
Release the motor from the board.



ASSEMBLY

STEP 1

Prepare the Dodson steering lock delete kit housing and the OEM steering lock control board.



STEP 2

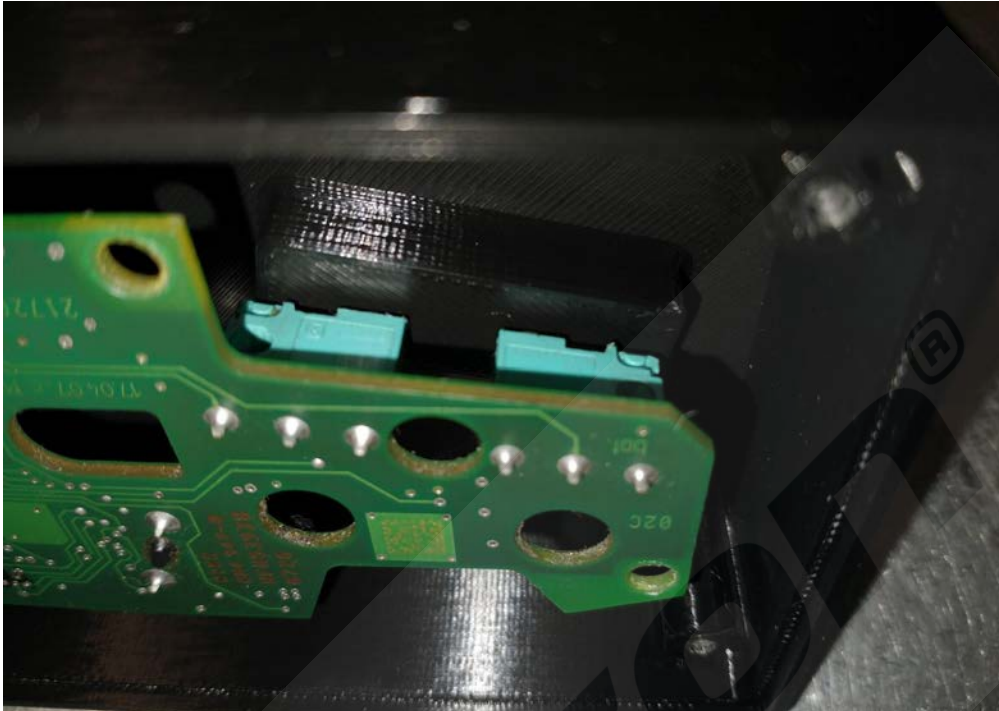
Fit the board to the housing.



BY OPENING AND USING THIS DOCUMENT YOU AGREE TO ABIDE BY THE FOLLOWING CONDITIONS. INFORMATION CONTAINED IN PART OR IN WHOLE REMAINS WITH DODSON MOTORSPORT. DODSON MOTORSPORT ACCEPTS NO RESPONSIBILITY FOR ANY REASON WHATSOEVER. DO NOT COPY / REPRODUCE IN ANY FORM OR MAKE PUBLIC WITHOUT THE PERMISSION OF DODSON MOTORSPORT.

STEP 3

Ensure the microswitches align with the step in the housing and that the board is fully seated.



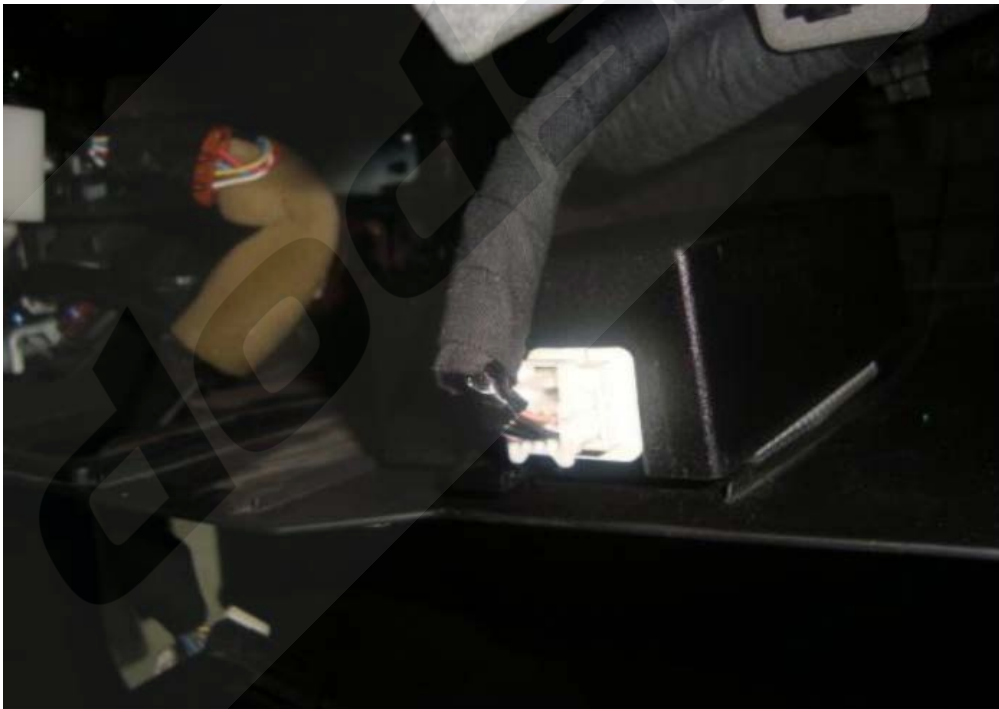
STEP 4

Fit the lower cover and secure with the four screws.



STEP 5

Install the Steering lock delete box to the kick panel below the steering column.



If you have any questions email us at technical@dodsonmotorsport.com