

dodson[®]

INSTALLATION INSTRUCTIONS

GR6 LPS PRO SENSOR KIT

DMS-00-0016 REV 003

20 APRIL 2022

**PREPARED BY: EDUARDO BITENCOURT
DATE: 20 APR 2022**

**RELEASED BY: 
DATE: 20APR2022**

REVISION UPDATE NOTES:

The following table indicates the changes made in this document since the previous revision.

All changes will be indicated by a revision bar in the margin.

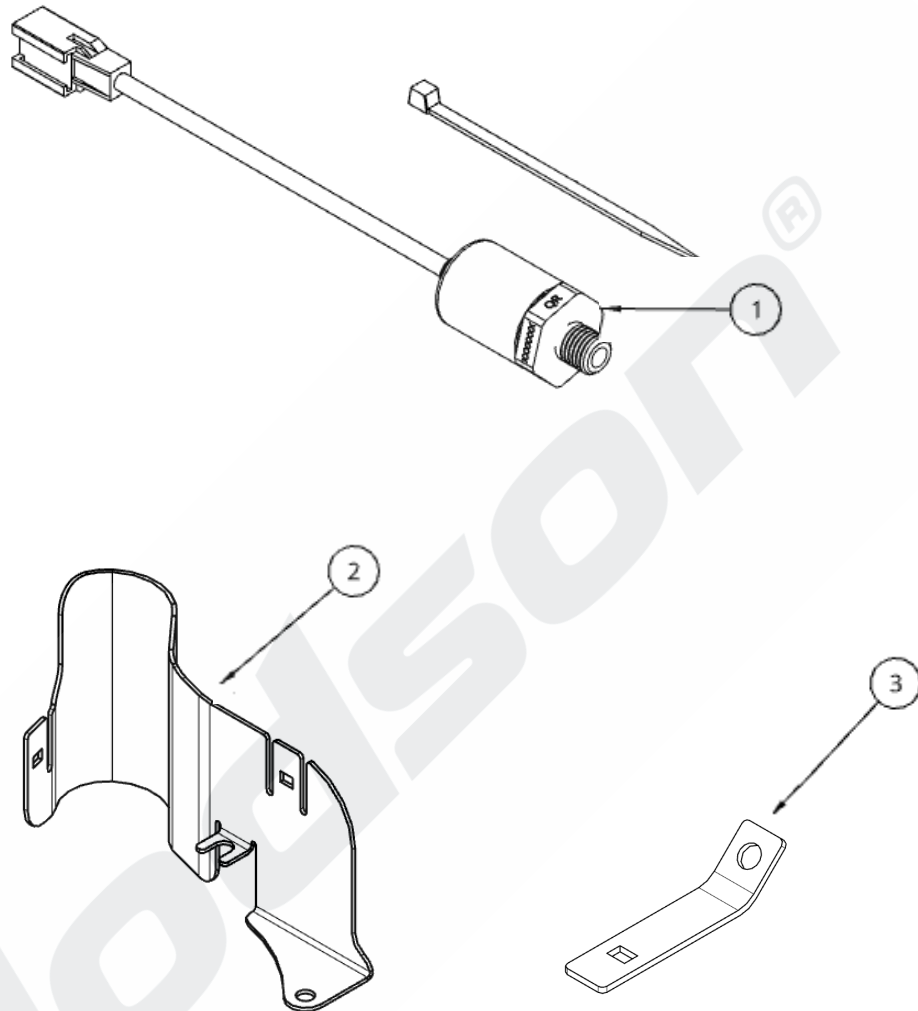
If you have any questions email us at technical@dodsonmotorsport.com

Revision	Date	Description
003	20/04/2022	ADDED PRECAUTIONS (PAGE 7)
002	29/03/2022	REVISED FORMAT
001	29/03/2022	INITIAL RELEASE

IMPORTANT NOTES:

Any important steps that are often missed will be highlighted in Yellow.

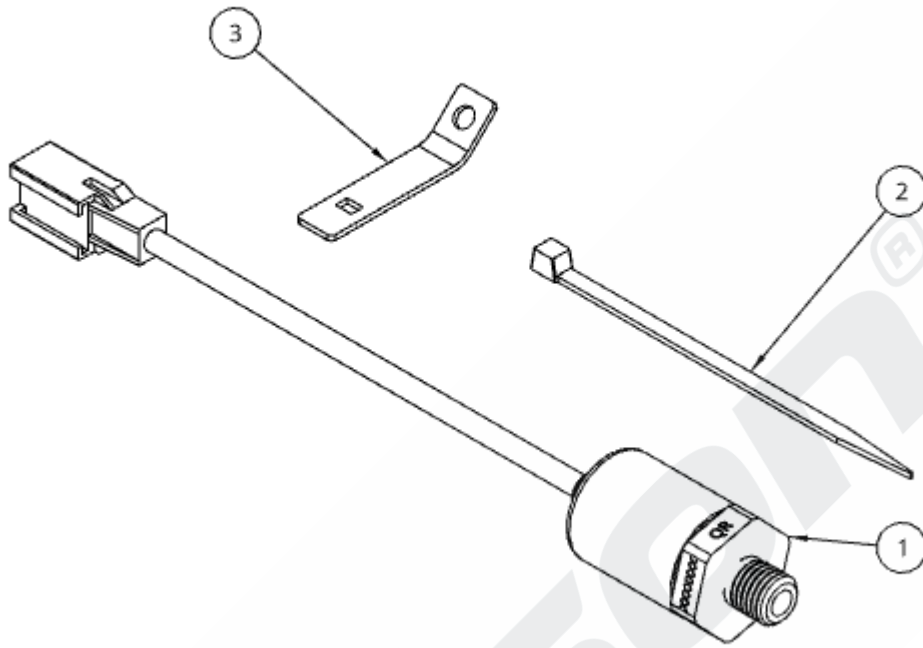
BY OPENING AND USING THIS DOCUMENT YOU AGREE TO ABIDE BY THE FOLLOWING CONDITIONS. INFORMATION CONTAINED IN PART OR IN WHOLE REMAINS WITH DODSON MOTORSPORT. DODSON MOTORSPORT ACCEPTS NO RESPONSIBILITY FOR ANY REASON WHATSOEVER. DO NOT COPY / REPRODUCE IN ANY FORM OR MAKE PUBLIC WITHOUT THE PERMISSION OF DODSON MOTORSPORT.

**KITS AVAILABLE
STANDALONE PARTS**

Part Number	Part Name	DMS Code	Qty
1	GR6 LINE PRESSURE/CLUTCH SENSOR	DMS-7203	1
2	GR6 CLUTCH PRESSURE SENSOR SHIELD	DMS-6220	1
3	GR6 LINE PRESSURE SENSOR SHIELD	DMS-6221	1

BY OPENING AND USING THIS DOCUMENT YOU AGREE TO ABIDE BY THE FOLLOWING CONDITIONS. INFORMATION CONTAINED IN PART OR IN WHOLE REMAINS WITH DODSON MOTORSPORT. DODSON MOTORSPORT ACCEPTS NO RESPONSIBILITY FOR ANY REASON WHATSOEVER. DO NOT COPY / REPRODUCE IN ANY FORM OR MAKE PUBLIC WITHOUT THE PERMISSION OF DODSON MOTORSPORT.

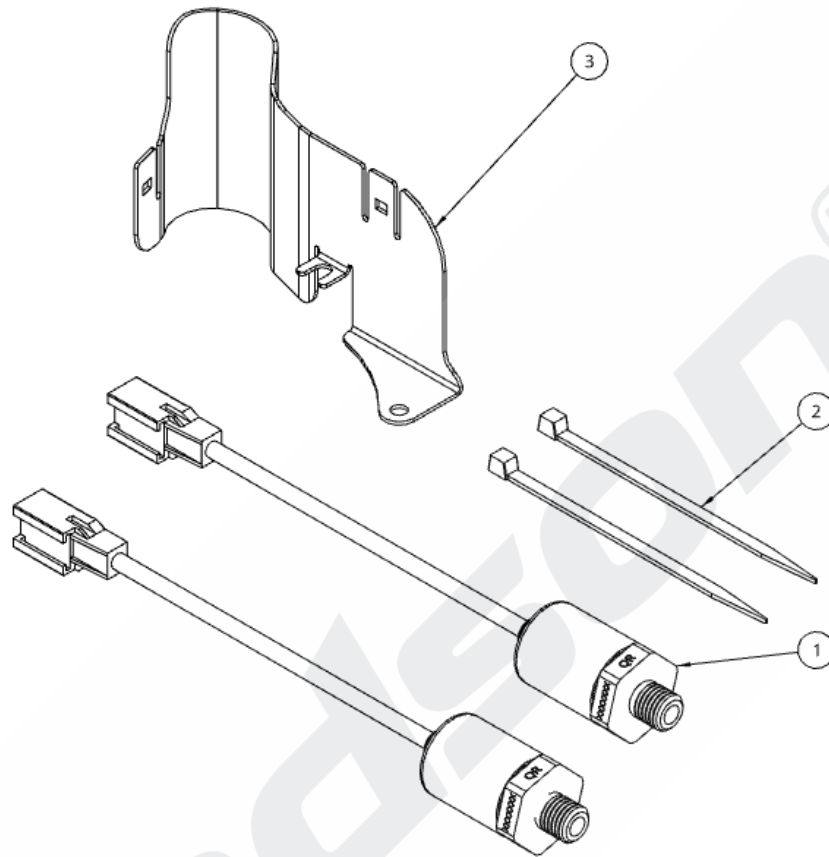
LINE PRESSURE KIT DMS-7222



Part Number	Part Name	DMS Code	Qty
1	GR6 LINE PRESSURE/CLUTCH SENSOR	DMS-7203	1
2	CABLE TIE	DMS-6210	1
3	GR6 LINE PRESSURE SENSOR SHIELD	DMS-6221	1

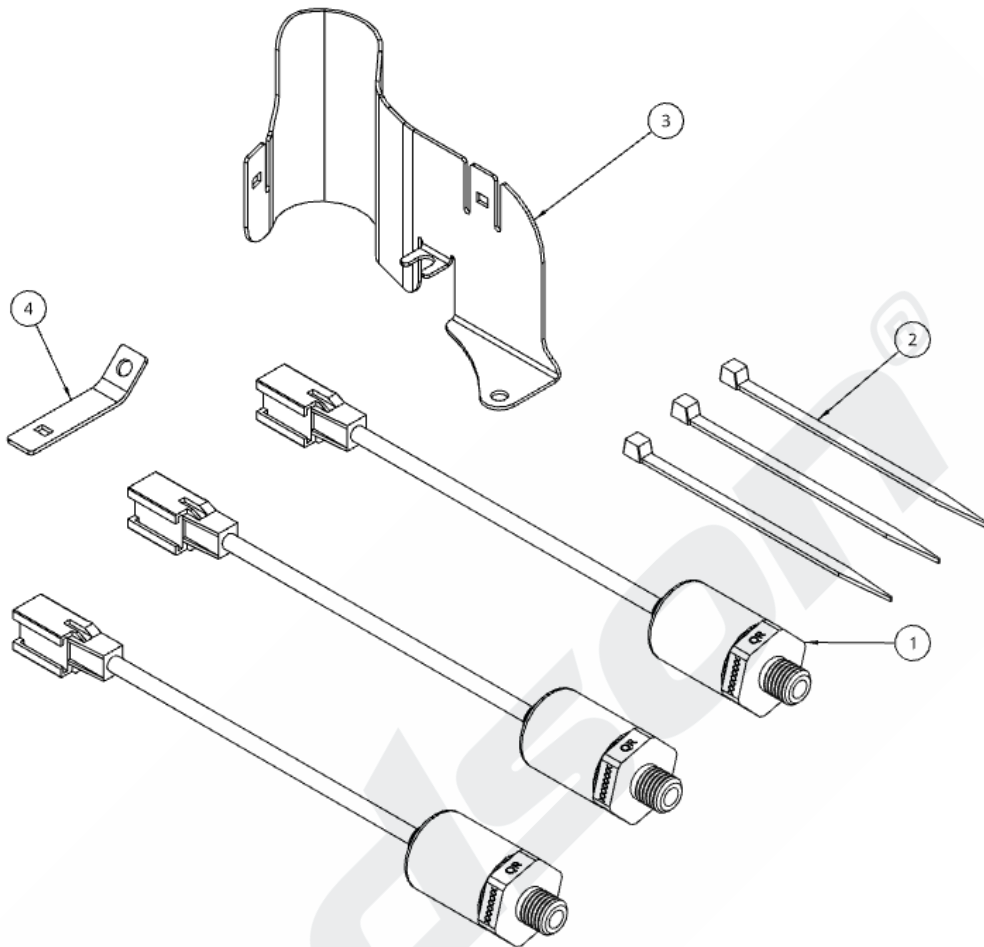
BY OPENING AND USING THIS DOCUMENT YOU AGREE TO ABIDE BY THE FOLLOWING CONDITIONS. INFORMATION CONTAINED IN PART OR IN WHOLE REMAINS WITH DODSON MOTORSPORT. DODSON MOTORSPORT ACCEPTS NO RESPONSIBILITY FOR ANY REASON WHATSOEVER. DO NOT COPY / REPRODUCE IN ANY FORM OR MAKE PUBLIC WITHOUT THE PERMISSION OF DODSON MOTORSPORT.

CLUTCH PRESSURE KIT DMS-7223



Part Number	Part Name	DMS Code	Qty
1	GR6 LINE PRESSURE/CLUTCH SENSOR	DMS-7203	2
2	CABLE TIE	DMS-6210	2
3	GR6 CLUTCH PRESSURE SENSOR SHIELD	DMS-6220	1

BY OPENING AND USING THIS DOCUMENT YOU AGREE TO ABIDE BY THE FOLLOWING CONDITIONS. INFORMATION CONTAINED IN PART OR IN WHOLE REMAINS WITH DODSON MOTORSPORT. DODSON MOTORSPORT ACCEPTS NO RESPONSIBILITY FOR ANY REASON WHATSOEVER. DO NOT COPY / REPRODUCE IN ANY FORM OR MAKE PUBLIC WITHOUT THE PERMISSION OF DODSON MOTORSPORT.

LINE & CLUTCH PRESSURE KIT DMS-7224

Part Number	Part Name	DMS Code	Qty
1	GR6 LINE PRESSURE/CLUTCH SENSOR	DMS-7203	3
2	CABLE TIE	DMS-6210	3
3	GR6 CLUTCH PRESSURE SENSOR SHIELD	DMS-6220	1
4	GR6 LINE PRESSURE SENSOR SHIELD	DMS-6221	1

BY OPENING AND USING THIS DOCUMENT YOU AGREE TO ABIDE BY THE FOLLOWING CONDITIONS. INFORMATION CONTAINED IN PART OR IN WHOLE REMAINS WITH DODSON MOTORSPORT. DODSON MOTORSPORT ACCEPTS NO RESPONSIBILITY FOR ANY REASON WHATSOEVER. DO NOT COPY / REPRODUCE IN ANY FORM OR MAKE PUBLIC WITHOUT THE PERMISSION OF DODSON MOTORSPORT.

INSTALLATION INSTRUCTIONS

PRECAUTIONS

The LPS Pro sensors have a short cable lead that is held in by a glued heat shrink piece. This glued heat shrink piece can get loose over the sensor operation, as it is in contact with oil. To prevent damages and malfunction, avoid pulling, hanging or shaking the sensor by the flying lead.

It's natural for pressure sensors to be very sensitive to vibration and shock, so it's advisable to avoid dropping the sensor and to keep it in its box or wrapped in plastic when not used.

Areas in which to take precautions are indicated in the Sensor Installation Steps below.

LPS PRO SENSOR

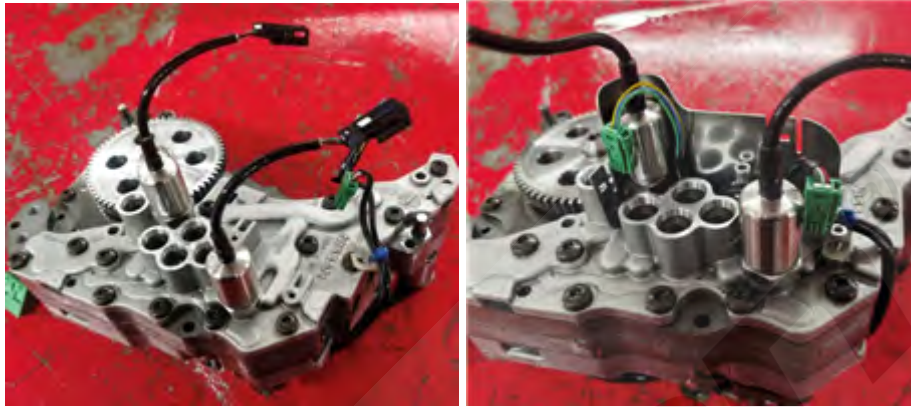
The new LPS Pro 25-bar sensors are designed as a direct replacement for the OEM sensors, with no need to change tuning or translation tables on the TCM file. The LPS Pro sensor has a cable output, terminated with the mating connector to the OEM loom inside the gearbox, and can be easily installed with a 22mm oxygen sensor socket (we recommend cutting a slot on the side to pass the cable through).



BY OPENING AND USING THIS DOCUMENT YOU AGREE TO ABIDE BY THE FOLLOWING CONDITIONS. INFORMATION CONTAINED IN PART OR IN WHOLE REMAINS WITH DODSON MOTORSPORT. DODSON MOTORSPORT ACCEPTS NO RESPONSIBILITY FOR ANY REASON WHATSOEVER. DO NOT COPY / REPRODUCE IN ANY FORM OR MAKE PUBLIC WITHOUT THE PERMISSION OF DODSON MOTORSPORT.

CLUTCH PRESSURE SENSOR**Step 1**

After removing the clutch pressure sensors from their original positions, install the LPS Pro sensors, tightening the sensors to 22 Nm (16.5 ft. Lbs). There is no need to use thread sealant or any chemicals on the sensor thread.

**Step 2**

After installing the clutch pressure sensors, install the clutch pressure sensor shield, and slide the connectors on the slots in the shield until the connectors are locked in place.



BY OPENING AND USING THIS DOCUMENT YOU AGREE TO ABIDE BY THE FOLLOWING CONDITIONS. INFORMATION CONTAINED IN PART OR IN WHOLE REMAINS WITH DODSON MOTORSPORT. DODSON MOTORSPORT ACCEPTS NO RESPONSIBILITY FOR ANY REASON WHATSOEVER. DO NOT COPY / REPRODUCE IN ANY FORM OR MAKE PUBLIC WITHOUT THE PERMISSION OF DODSON MOTORSPORT.

Step 3

Next, bend the sensor cable according to the picture, and reconnect the OE connector. **TAKE CAUTION WHEN DOING THIS STEP TO NOT PULL ON THE WIRING.**

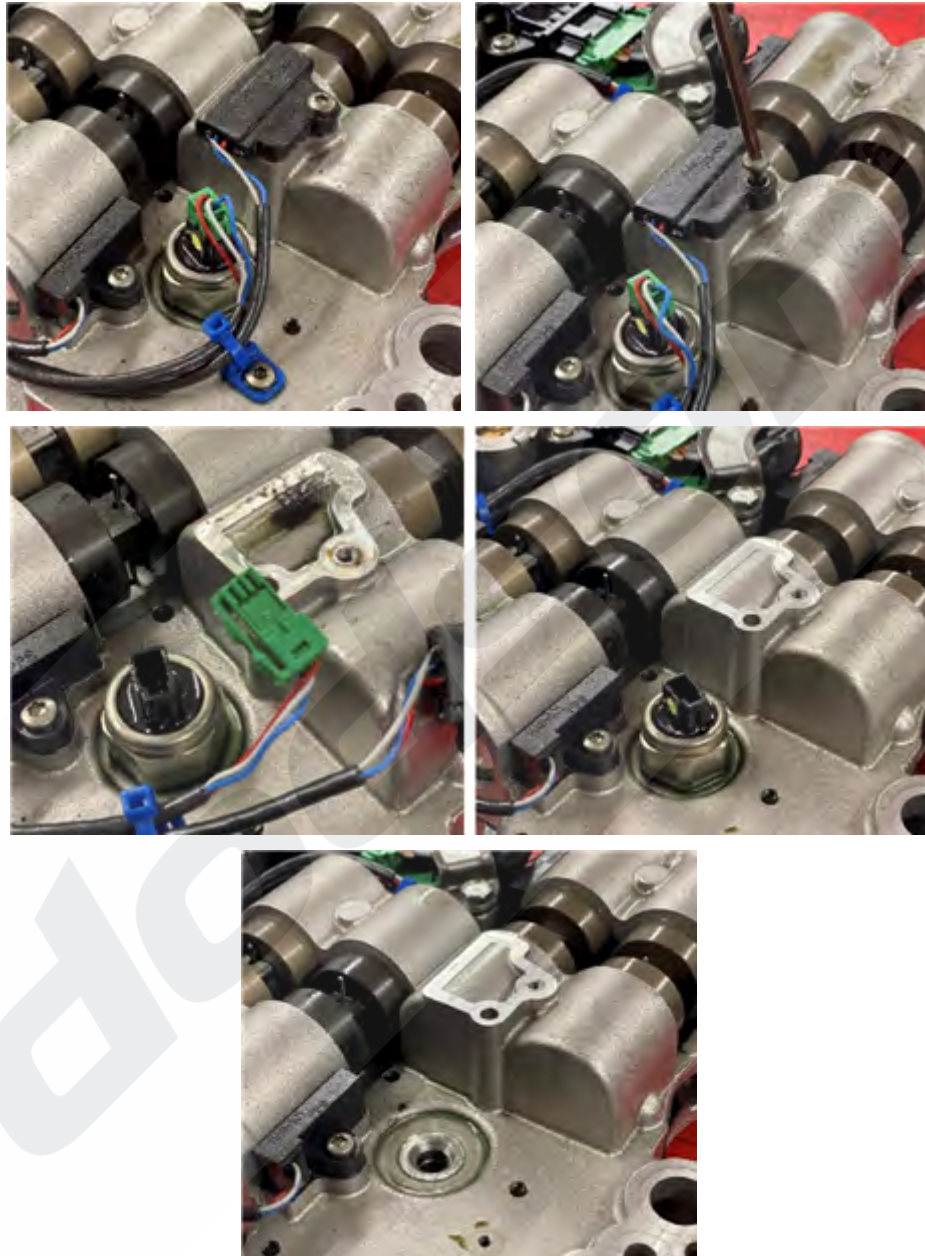
Finalize the installation by securing the cable around the sensor with the supplied cable tie, trimming the ends of the cable tie with a side cutter. The valve body can then be reinstalled into the gearbox.



BY OPENING AND USING THIS DOCUMENT YOU AGREE TO ABIDE BY THE FOLLOWING CONDITIONS. INFORMATION CONTAINED IN PART OR IN WHOLE REMAINS WITH DODSON MOTORSPORT. DODSON MOTORSPORT ACCEPTS NO RESPONSIBILITY FOR ANY REASON WHATSOEVER. DO NOT COPY / REPRODUCE IN ANY FORM OR MAKE PUBLIC WITHOUT THE PERMISSION OF DODSON MOTORSPORT.

LINE PRESSURE SENSOR**Step 1**

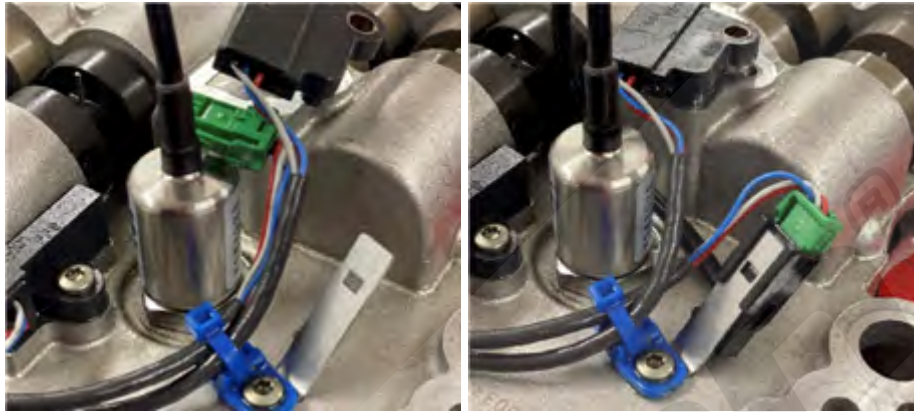
Remove the position sensor and the screws for the wiring clips shown in the picture. The clips and the position sensor must be removed before the sensor, to avoid any damage to the sensors or cables. Then remove the OE line pressure sensor.



BY OPENING AND USING THIS DOCUMENT YOU AGREE TO ABIDE BY THE FOLLOWING CONDITIONS. INFORMATION CONTAINED IN PART OR IN WHOLE REMAINS WITH DODSON MOTORSPORT. DODSON MOTORSPORT ACCEPTS NO RESPONSIBILITY FOR ANY REASON WHATSOEVER. DO NOT COPY / REPRODUCE IN ANY FORM OR MAKE PUBLIC WITHOUT THE PERMISSION OF DODSON MOTORSPORT.

Step 2

Install the LPS Pro sensor, and add the metal bracket to the wiring clip, as shown in the picture. Then slide the connector in the slot until it locks. Bend the cable around the sensor and secure it with the cable tie. **TAKE CAUTION WHEN DOING THIS STEP TO NOT PULL ON THE WIRING.**



BY OPENING AND USING THIS DOCUMENT YOU AGREE TO ABIDE BY THE FOLLOWING CONDITIONS. INFORMATION CONTAINED IN PART OR IN WHOLE REMAINS WITH DODSON MOTORSPORT. DODSON MOTORSPORT ACCEPTS NO RESPONSIBILITY FOR ANY REASON WHATSOEVER. DO NOT COPY / REPRODUCE IN ANY FORM OR MAKE PUBLIC WITHOUT THE PERMISSION OF DODSON MOTORSPORT.