

dodson[®]


CALIBRATION INSTRUCTIONS

DQ250 VCDS BASIC SETTING

DMS-00-0053 REVISION 001

2 FEBRUARY 2023

**PREPARED BY: JAN PISL
DATE: 02FEB2023**

**RELEASED BY: 
DATE: 02FEB2023**

REVISION UPDATE NOTES:

The following table indicates the changes we have made in either the disassembly or assembly of the product you have received. All changes are indicated by a revision bar in the margin.

If you have any questions email us at technical@dodsonmotorsport.com

Revision	Date	Description
REV.001	02FEB2023	- Document creation.



VCDS BASIC SETTING AND ADAPTATION DRIVE INSTRUCTIONS

STEP 1

Start the vehicle on a lift with the wheels off the ground and **select neutral as soon as possible**.

Let the vehicle idle for a couple of minutes.

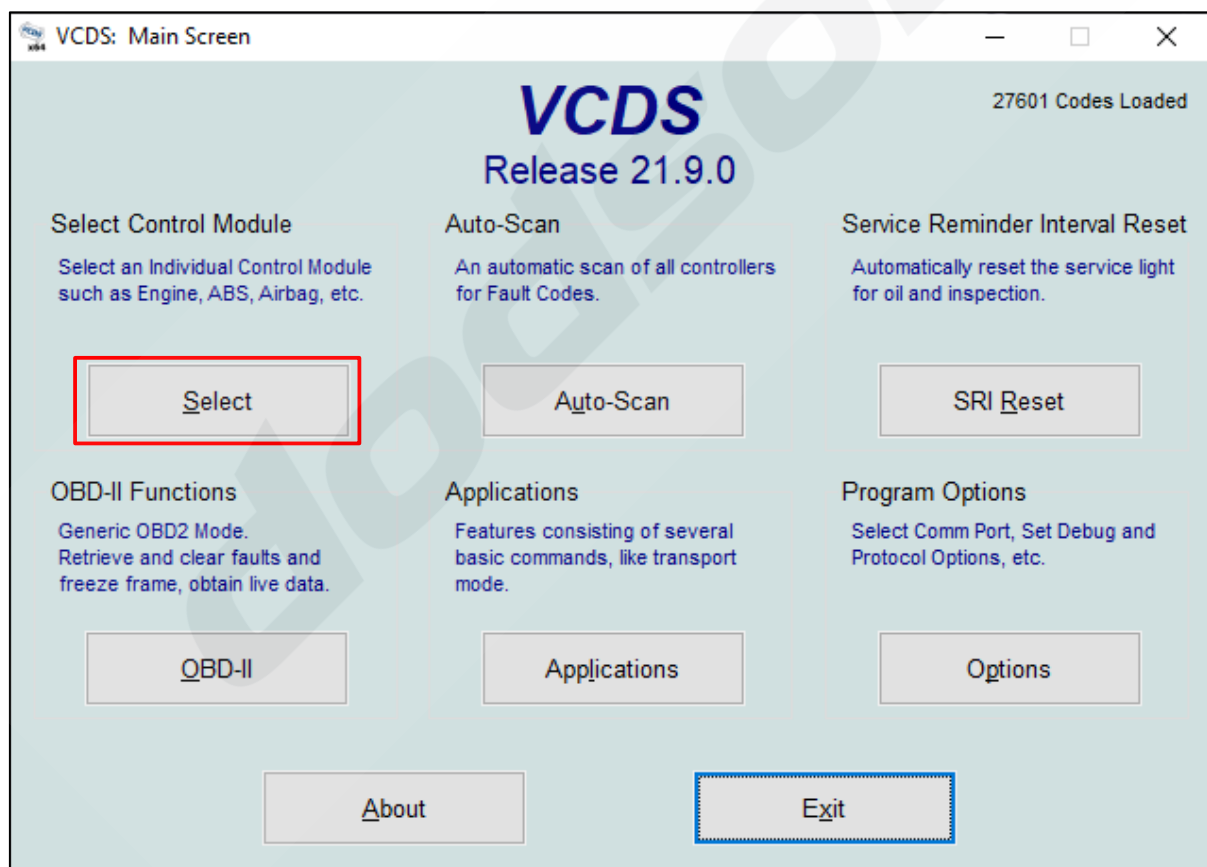
STEP 2

Turn stability control off and run the vehicle up and down through all gears in manual mode, then select neutral again.

Keep the vehicle running to warm up the transmission. Increasing engine RPM can help warming the transmission fluid faster.

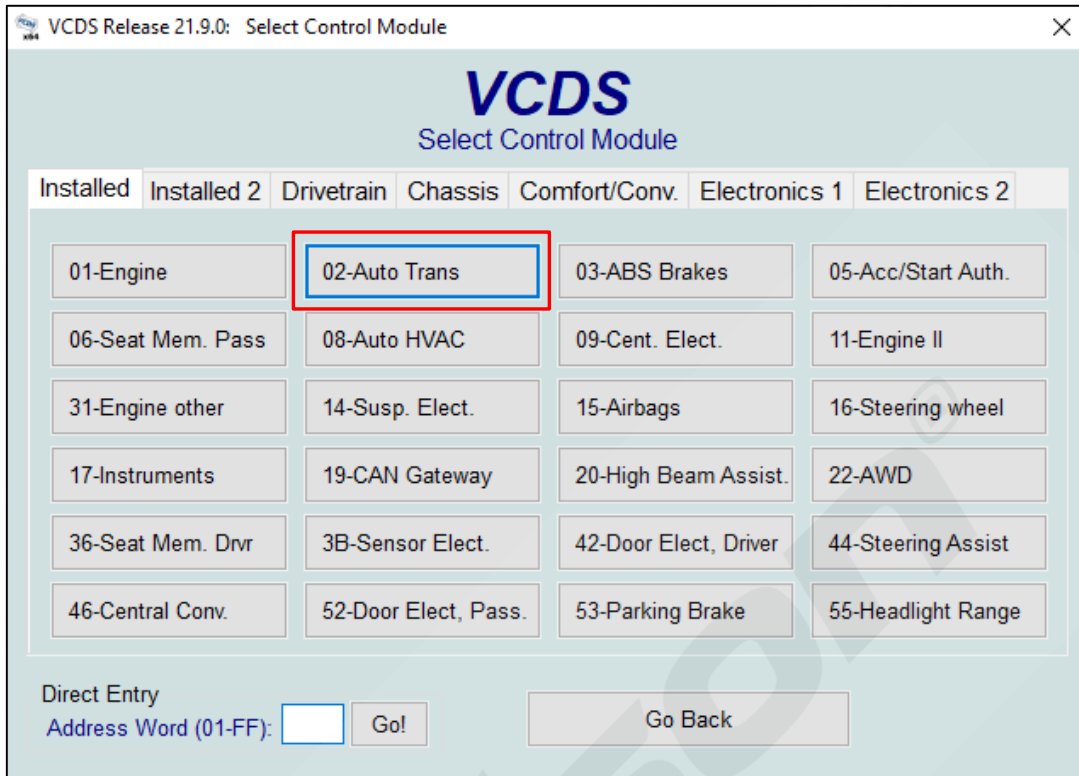
STEP 3

While the transmission is warming up, connect the diagnostic dongle to the OBD port and open up VCDS on the computer. Select **"Select Control Module"**.



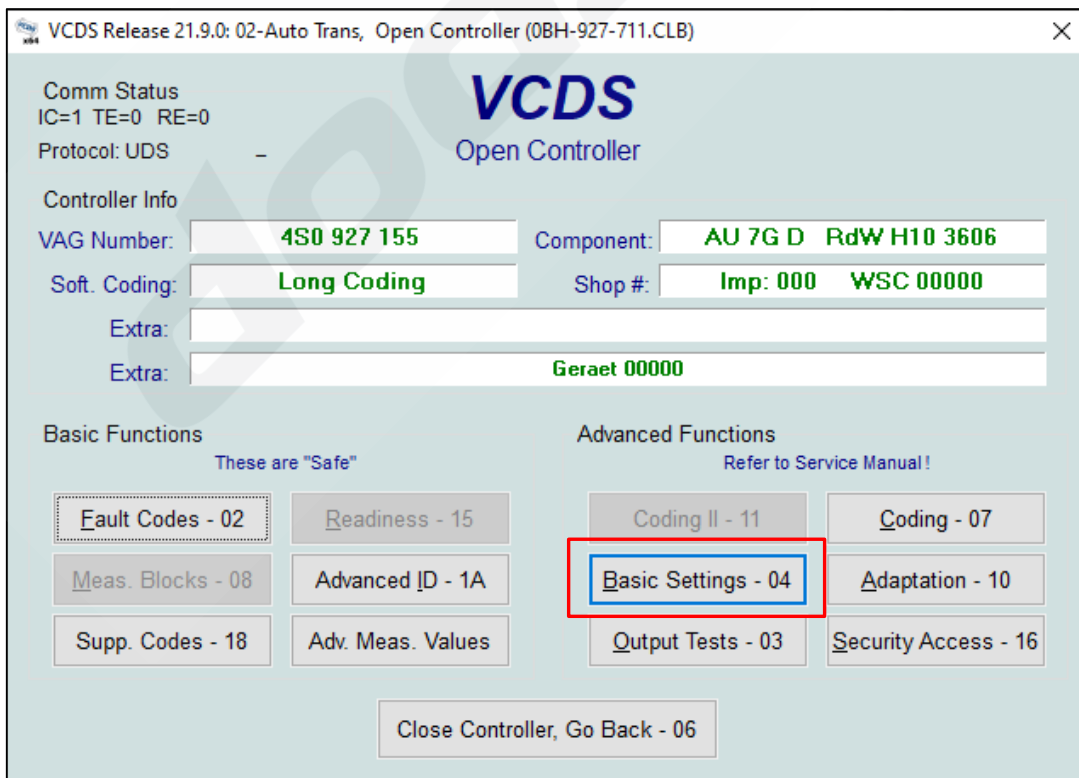
STEP 4

Select "02-Auto Trans".



STEP 5

Select "Basic Settings".



STEP 6

Transmission fluid temperature must be between **30-100°C (86-210°F)**. (This can be checked in 'Measuring Blocks', Group 019)

Put the selector into park and apply the parking brake. (engine still running)

The brake pedal must be depressed for the entire procedure, and the throttle must not be operated.

NOTE:

Unusual noises and vibrations may be observed during the procedure, this is normal.

STEP 7

Transmission Tolerances (Engaged Calibration)

Type in group **061**, then select **[Go!]**. The transmission will begin making noises and the numbers on the screen will move around. When the numbers stop moving, the transmission goes quiet and the 'Basic Settings' switches from 'Off' to 'On', the process has completed.

STEP 8

Transmission Tolerances (Sync. Point Measurement).

Type in group **060**, then select **[Go!]**. When the numbers stop moving, the transmission goes quiet and the 'Basic Settings' switches from 'Off' to 'On', the process has completed.

STEP 9

Clutch Adaptation.

- For Control modules with a software version <0800, select Group **062**, **[Go!]**. Activate the **Basic Setting [ON/OFF/NEXT]**.
- For Control modules with a software version >=0800, select Group **067**, **[Go!]**. Activate the **Basic Setting [ON/OFF/NEXT]**.

STEP 10

Reset Values (Clutch Safety Function).

Type in Group **068**, and press **[Go!]**. Activate the **Basic Setting [ON/OFF/NEXT]**.

STEP 11

Reset Values (Pressure Adaptation).

Type Group **065**, and press **[Go!]**. Activate the **Basic Setting [ON/OFF/NEXT]**.

STEP 12

Reset Values (Steering wheel paddle installation).

Type Group **063**, and press **[Go!]**. Activate the **Basic Setting [ON/OFF/NEXT]**.

STEP 13

Reset Values (ESP & Tip Cruise control Installation).

Type Group **069**, and press **[Go!]**. Activate the **Basic Setting [ON/OFF/NEXT]**.

STEP 14

Press **[Done, Go Back]**. Switch IGN OFF for 10 seconds and switch back ON again.

STEP 15

Clear and recheck fault codes **[Fault Codes – 02]**. If no fault codes are present, proceed with the adaptation drive.

ADAPTATION DRIVE

During the drive, the fluid temperature has to be between **30°C and 100°C**.

Drive in **Tiptronic Mode** from standstill up to 6th Gear. While doing that make sure to drive in Gears **3 or 5** for approx. 5 minutes and also in **4 or 6** for approx. 5 minutes. The engine speed window for all gears is **1200 - 3500 RPM** (for clutch calibration). **Do not use cruise control.**

Perform one sharp braking followed by a short full-throttle acceleration (oil return check) while in Drive, Not Tiptronic Mode.

Evaluate creep and starting-off points. Check for leaks.

NOTE:

- Some modules do not require the use of the [ON/OFF/Next] button. If an error is displayed after clicking the button, or the Basic Settings status does not switch to On, let the selected group and procedure finish on its own.
- It is normal for the transmission to make noise while the tolerances are adapting. Do not exit or abort the Basic Settings sequence prematurely if you hear clacking noises.
- Customers with TDI's have reported that an RPM range of 2000-2500 rpm is sufficient.
- If Basic Settings group 062 reports ERROR: | Group 062 | Not | Available try test driving the vehicle and repeating at normal operating temp.
- The vehicle will continue to self adapt as it is driven.
- It may be necessary to downshift into 1st gear manually when coming to a stop to avoid "bumping".

If you have any questions email us at technical@dodsonmotorsport.com