



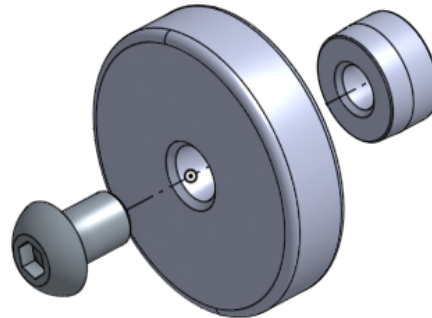
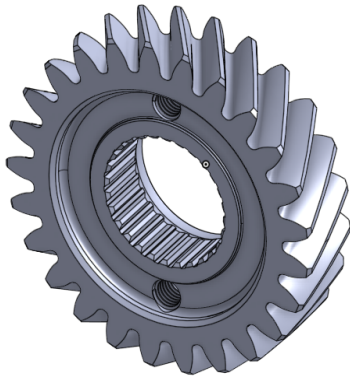
INSTALLATION INSTRUCTIONS

GR6 FWD GEAR

DMS-00-0055 REV 002

15 FEBRUARY 2023

FWD GEAR & LOCK CONTENTS



Item Number	Part Name	DMS Code	Qty
1	DMS ED FWD PINION	DMS-5126	1
2	DMS GEAR LOCK	DMS-7133	1

* The ED FWD Pinion (*DMS-5126*) should be used in conjunction with the Dodson ED FWD Output Shaft (*DMS-7907*).

REVISION UPDATE NOTES:

The following table indicates the changes made in this document since the previous revision. All changes will be indicated by a revision bar in the margin.

If you have any questions email us at technical@dodsonmotorsport.com

Revision	Date	Description
REV.002	15FEB2023	- Revised formatting
REV.001	10SEP2021	- Updated to new format

FWD GEAR INSTALLATION INSTRUCTIONS

ASSEMBLY

Please note that DMS FWD pinion and FWD Output shaft come in pairs and should be used together. We also recommend that you use a DMS Main Shaft Thrust Plate (*DMS-7904*) which carries bearings to hold the main and input shafts.

STEP 1

Heat the DMS FWD pinion to **150°C for up to 10 minutes**.

STEP 2

Assemble the heated FWD pinion on the main shaft and align the splines.



STEP 3

Locate the gear in its place by using the DMS pressing tool and light taps using a hammer.

Make sure the gear is sitting against the bearing face.



STEP 4

Use OEM circlip to hold the gear in place on the main shaft.



IMPORTANT NOTE

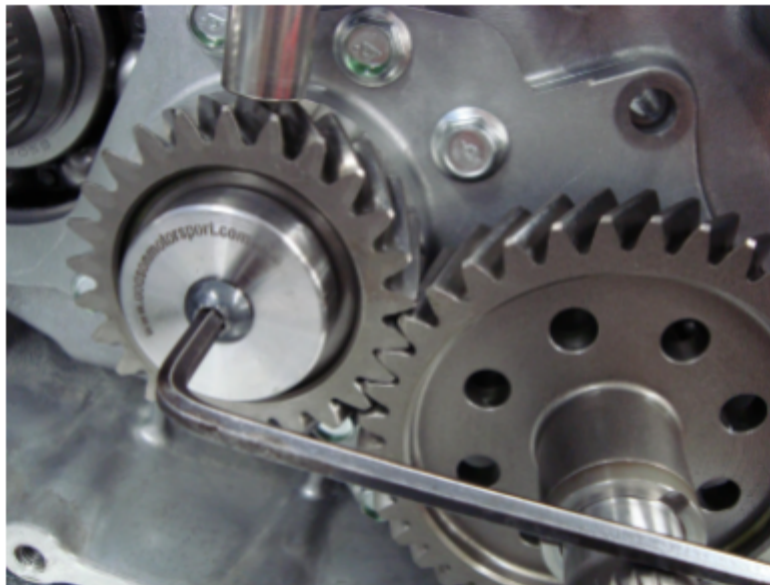
The plug in the end of the shaft must be removed before the DMS gear-lock (*DMS-7133*) can be fitted

STEP 5

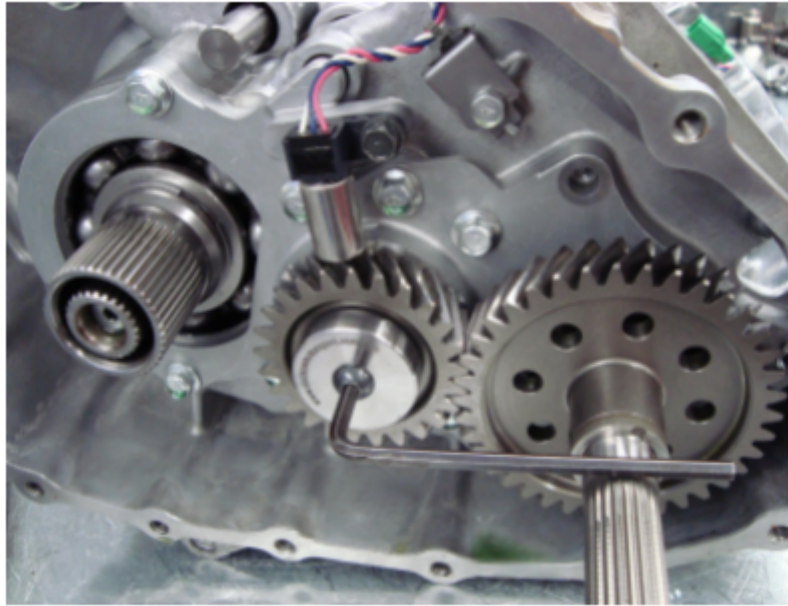
Use DMS gear-lock for retaining the circlip in place.

NOTE: Before installation, remove the bolt from the gearlock and apply threadlocker ie: blue Loctite.

Press the gear-lock against the main shaft. Lightly tap on the gear lock for proper placement. Once aligned, tighten to **30Nm**.



COMPLETED ASSEMBLY



If you have any questions email us at technical@dodsonmotorsport.com