

dodson[®]

BMW SUMP INSTALL INSTRUCTIONS

28/05/19

version 1.1

BY OPENING AND USING THIS DOCUMENT YOU AGREE TO ABIDE BY THE TERMS AND CONDITIONS. INFORMATION CONTAINED IN PART OR IN WHOLE REMAINS WITH DODSON MOTORSPORT. DO NOT COPY / REPRODUCE IN ANY FORM OR MAKE PUBLIC WITHOUT THE PERMISSION OF DODSON MOTORSPORT.

Instruction Notes

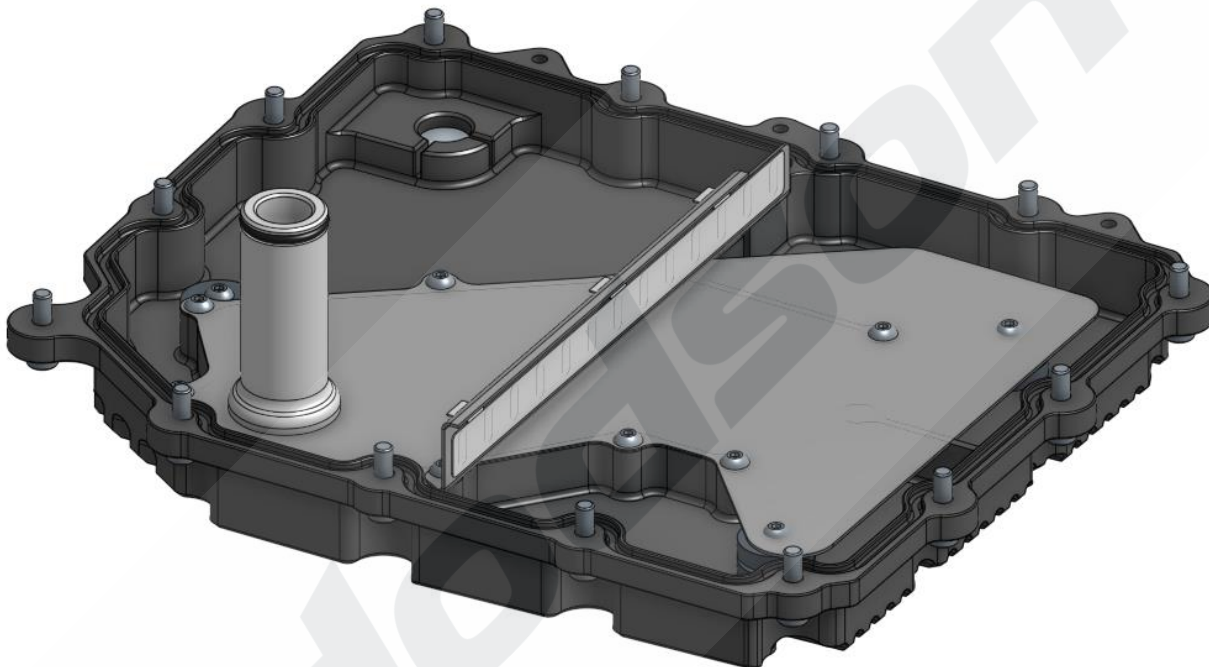
The following tools are required for the install:

- BMW sump install kit
- Standard metric hex wrench set
- T30 Torx Socket or wrench
- Torque wrench 10Nm – 40Nm
- Oil drain tray and transmission oil filler tools

Out of the box

Out of the box the baffle plate and the filter stem must be installed.

2 screws to mount the baffle plate and the filter stem should just press fit into the filter.



Instruction Method

Step 1

Remove the under tray from the vehicle

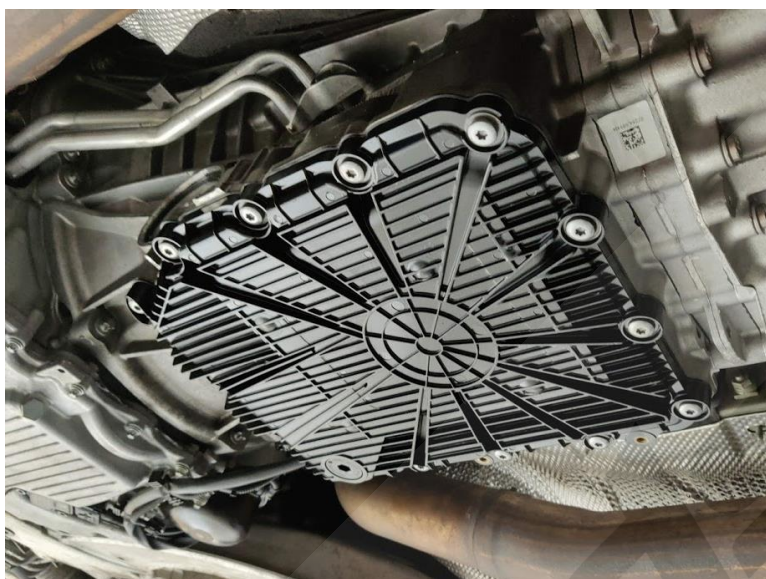
Step 2

Drain oil and remove the OEM sump from the transmission.

If this oil is still fresh it can be reused.

Step 3

Remove the OEM filter and the pickup for the intake.



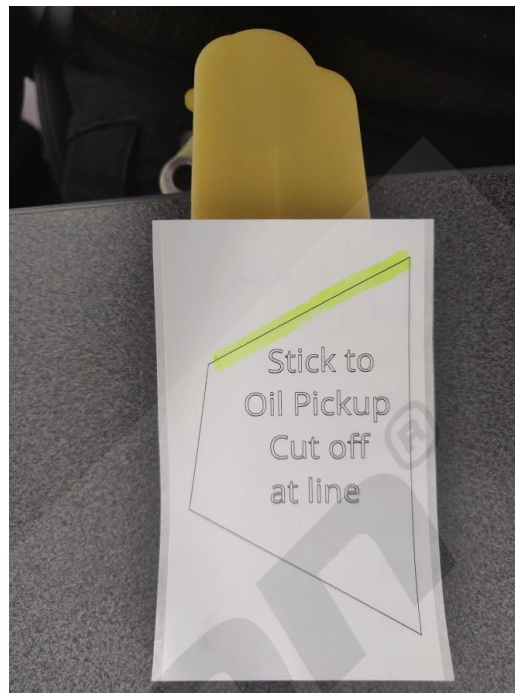
Step 4

The pickup required modification to fit the DMS sump pan.

Clean the Pickup with brake clean.



Stick the lable to the bottom side of the pickup.



Then cut along the highlighted edge.

The trimmed pickup will now fit with the DMS sump.

Step 5

Re-install the pickup.

Step 6

Install the DMS Sump to the transmission.

Make sure the filter stem lines up with the oil hole inside the transmission.



12Nm on all the bolts.

Step 7

Install the heat shield and the under tray on the vehicle



Note: for v8 applications the customer will have spacers and replacement screws for the under tray. These are required for the sump to fit.